



EL JAGUAR

V I V E

Definition of Biological  
Corridors for Jaguar  
(*Panthera Onca*) in the  
*Yucatan Península*

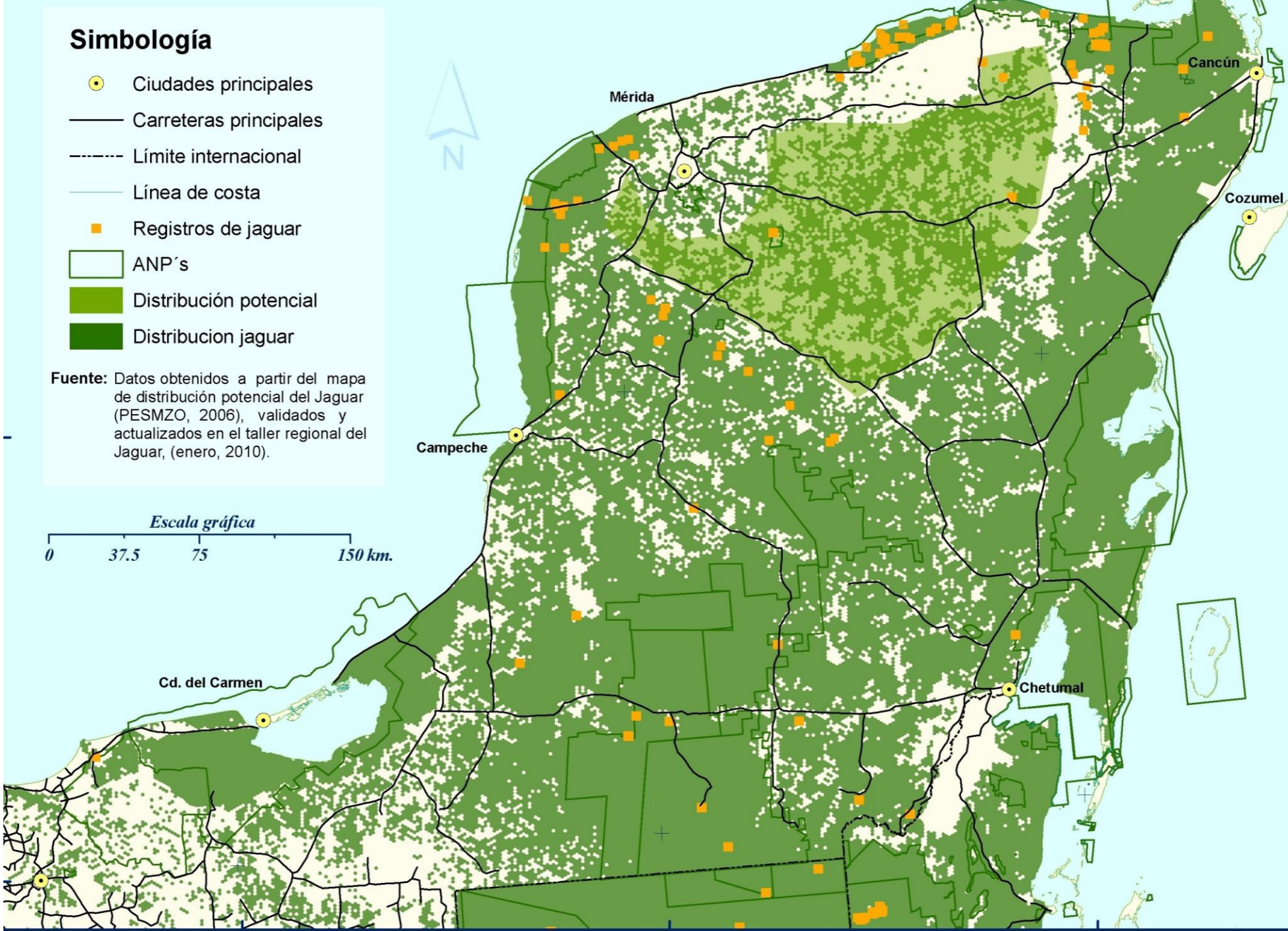


By: Gerardo García Contreras

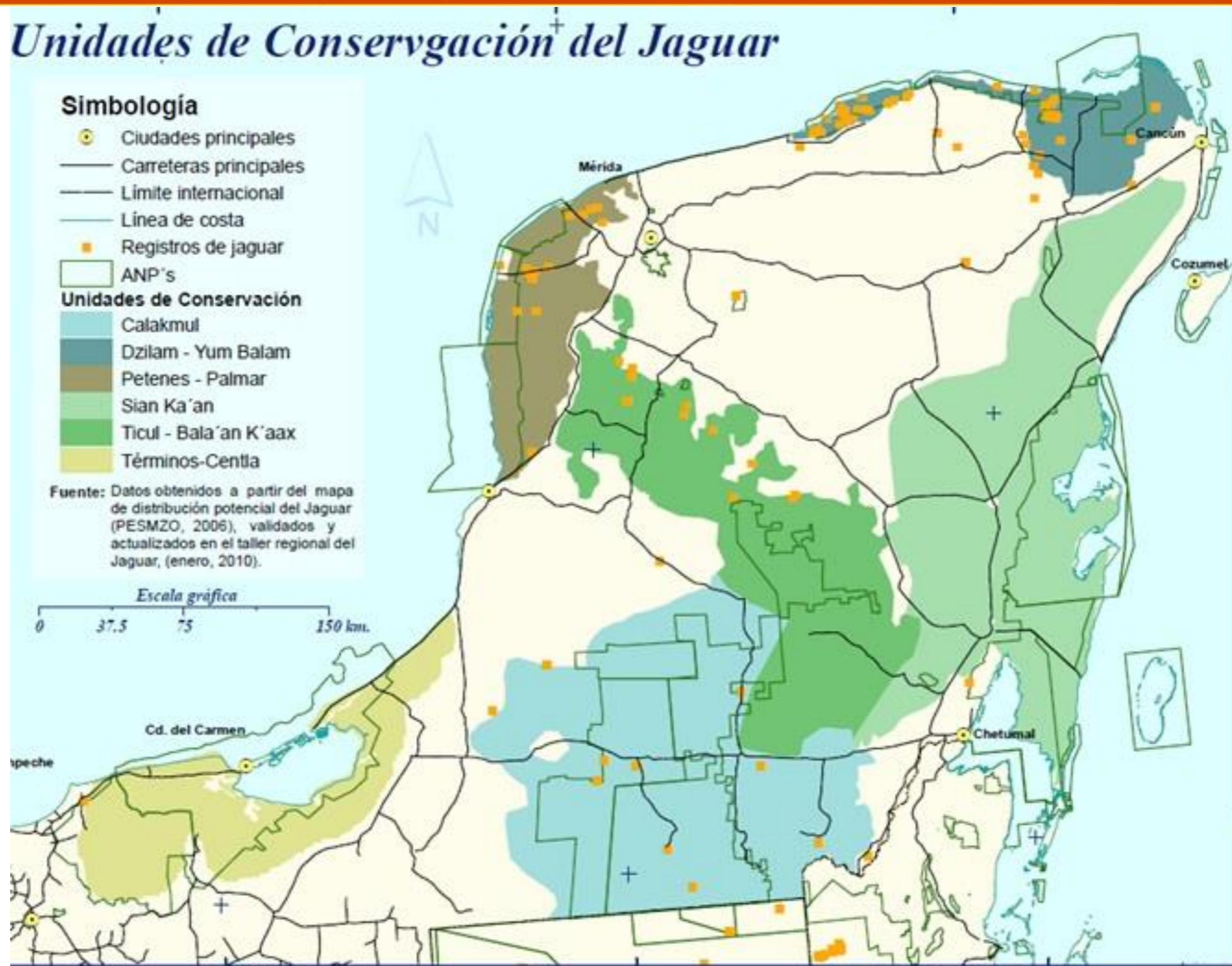
*Abril, 2014*

- 1. Where is the Jaguar?**
- 2. Who are studying the jaguar?**
- 3. Where are the Jaguar's records?**
- 4. When are the date to records to Jaguar?**

### Áreas de Distribución del Jaguar



### Unidades de Conservación del Jaguar



- **Source: Potential distribution Jaguar maps ( PESHZO, 2006).**
- **Jaguar records to 2010.**
- **Generalized jaguar map.**
- **Results without validation.**

- 1. Generate a Jaguar's map distribution actualized and with more precision.***
- 1. Have one data base with jaguar records actualized and standardized for take decisions.***



EL JAGUAR

V I V E



¡ Conócelo y ayúdanos a conservar su huella !

## Studies of the Jaguar in Yucatan's Peninsula.

**79 Documents** (papers, Book sections, reports) eating habits, population density, habitat use, conflicts Jaguar/humans, etc).

**75% Calakmul, Campeche**  
**25% Quintana Roo.**  
**0% Yucatan**

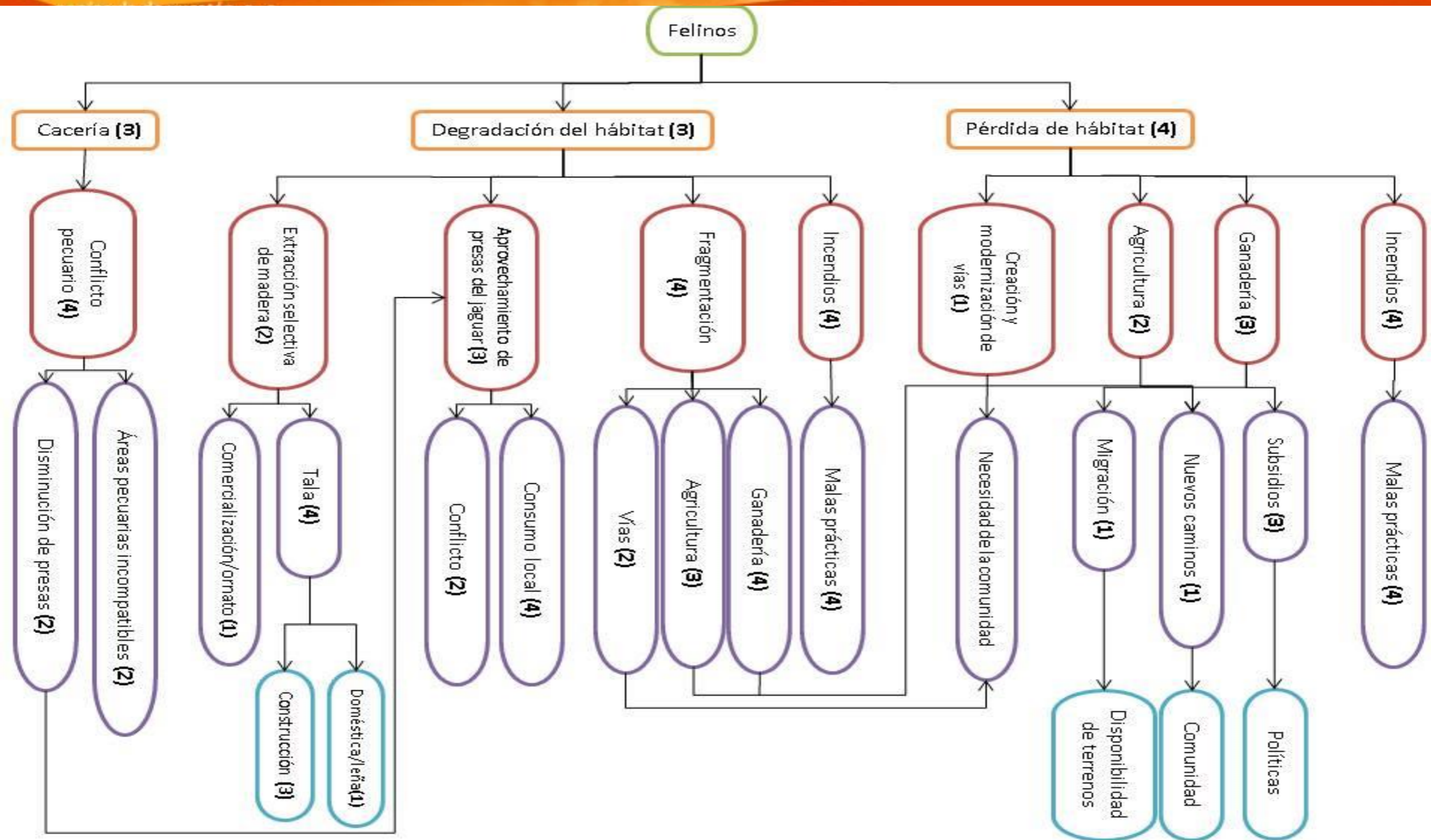
327 registros, en donde el estado de Yucatán cuenta con el mayor número (191) que se concentran principalmente en la región de la reserva privada el Zapotal; Campeche es cuenta con una mejor distribución espacial de los registros (124) y Quintana Roo es la entidad que se encuentra menos representada (solo 12 registros). Esta información se espera complementar a lo largo del proyecto y principalmente con los datos que se obtendrán de las consultas con los expertos y los talleres



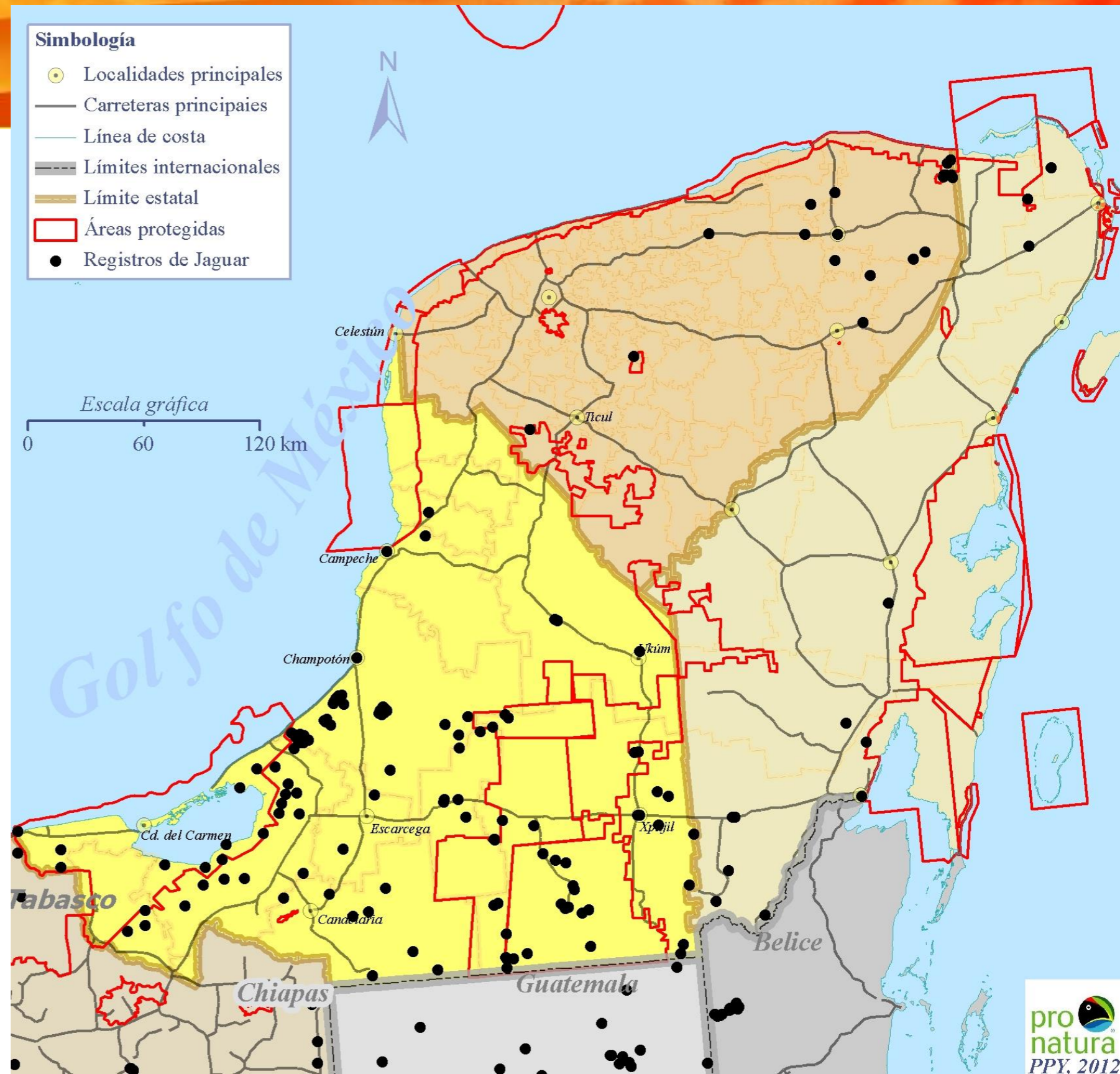
## Jaguar Records in the Yucatan's Peninsula.

327	Yucatan's peninsula
191	Yucatan
124	Campeche
12	Quintana Roo

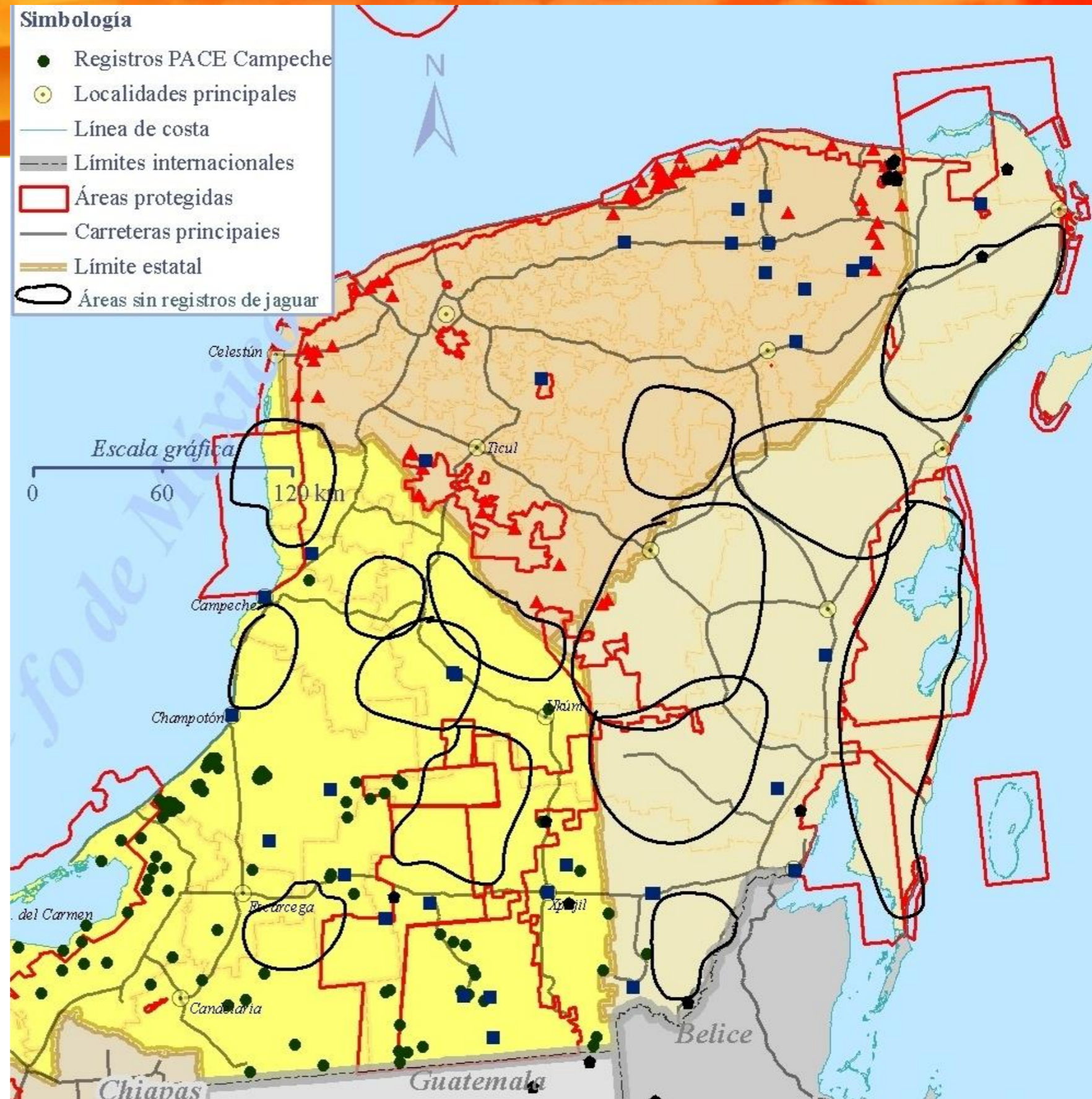
# Results (Treads)



- Jaguar records 2010



- Jaguar records (2013)
- Gaps



- I. Land tenure / Land use/ Human impact.
- II. Habitat (vegetation type).
- III. Localization (coordinates, state, municipio, locality).
- IV. Record type (directly, indirectly).
- V. Date and hour
- VI. Sex
- VII. Institution / Collector / Project

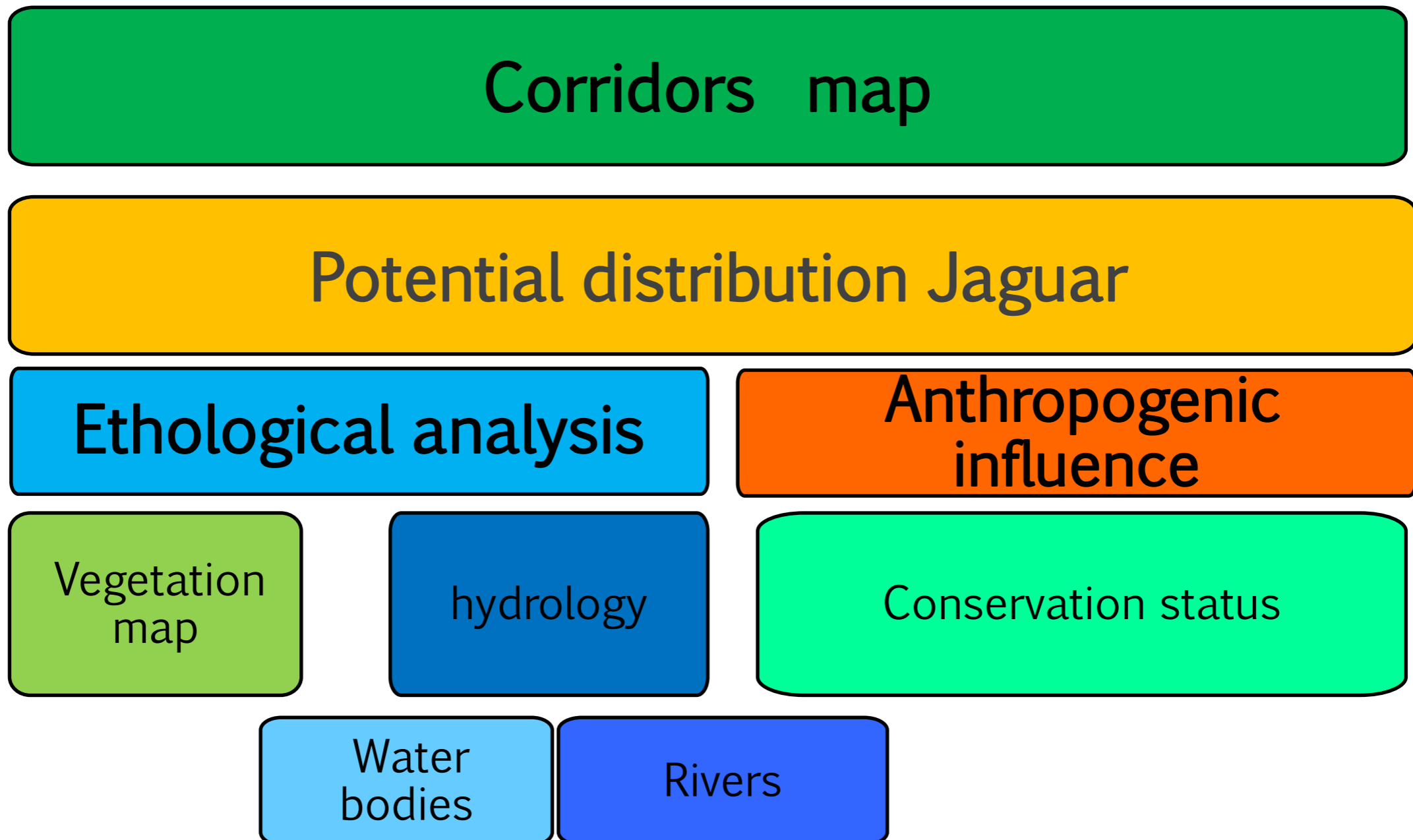


## Products

- Database in one only site
- Database approved, systematized, accessible and validated.



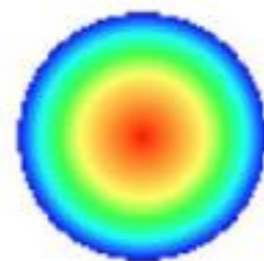
- Responsibilities who manage
- Responsibilities who provides information
- Responsibilities who use and management of information (credits)
- Define levels of use



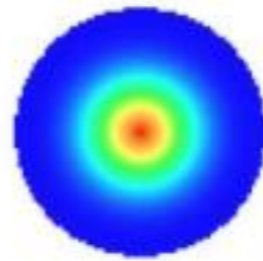
Variables	Dependence	Variable types	Preference	Impact
Vegetation and Land Use	High	Selva alta subperennifolia y perenifolia	Very high	Linear
		Selva mediana subperennifolia y perenifolia	Very high	Linear
		Selva baja inundable	Low	Linear
		Selva Baja Caducifolia	Low	Linear
		Selva Mediana Subcaducifolia	Medium	Linear
		Vegetación riparia	High	Linear
		Vegetación secundaria 10 años	Low	Linear
		Vegetación secundaria 20 años	Low	Linear
		Vegetación secundaria 30 años	Low	Linear
		Saskaberas	N/A	Linear
		Manglar	High	Linear
		Palmar	High	Linear
		Popal-Tular	Low	Linear
Sabana	Low	Linear		



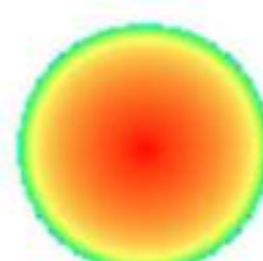
Variables	Dependence	Variable types	Preference	Impact
<b>Hydrology</b>	High	Cuerpos de agua selvas secas	Very High	Linear
		Cuerpos de agua selvas húmedas	High	Linear
		Cuerpos de agua selvas vegetación secundaria	High	Linear
		Cuerpos de agua agropecuario	Medium	Linear
		Cuerpos de agua urbano	Low	Linear
		Escurremientos	High 3-8 orden	Linear
<b>Conservation status</b>	High	Estado de conservación		



Lineal



Cóncavo

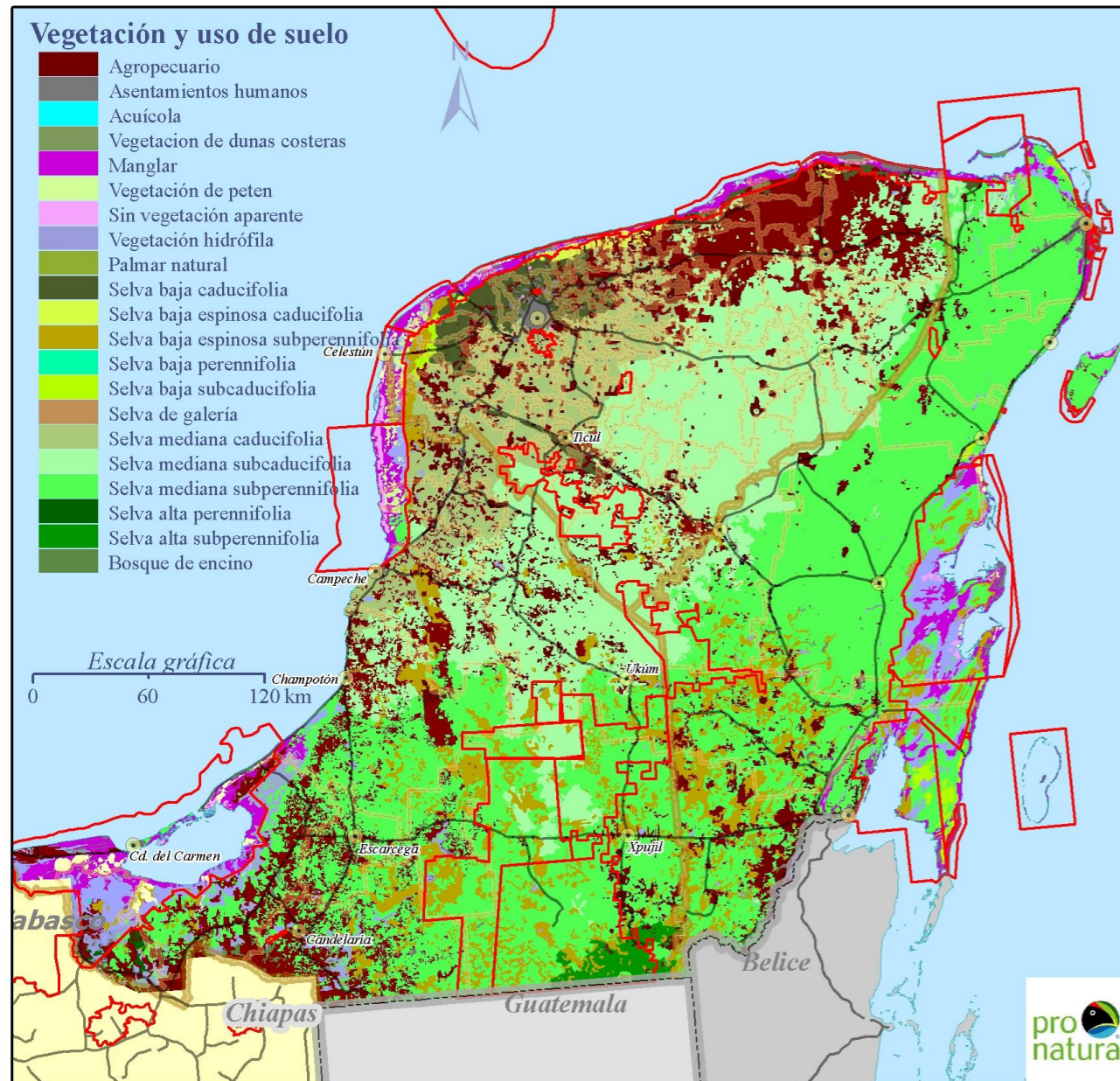


Convexo

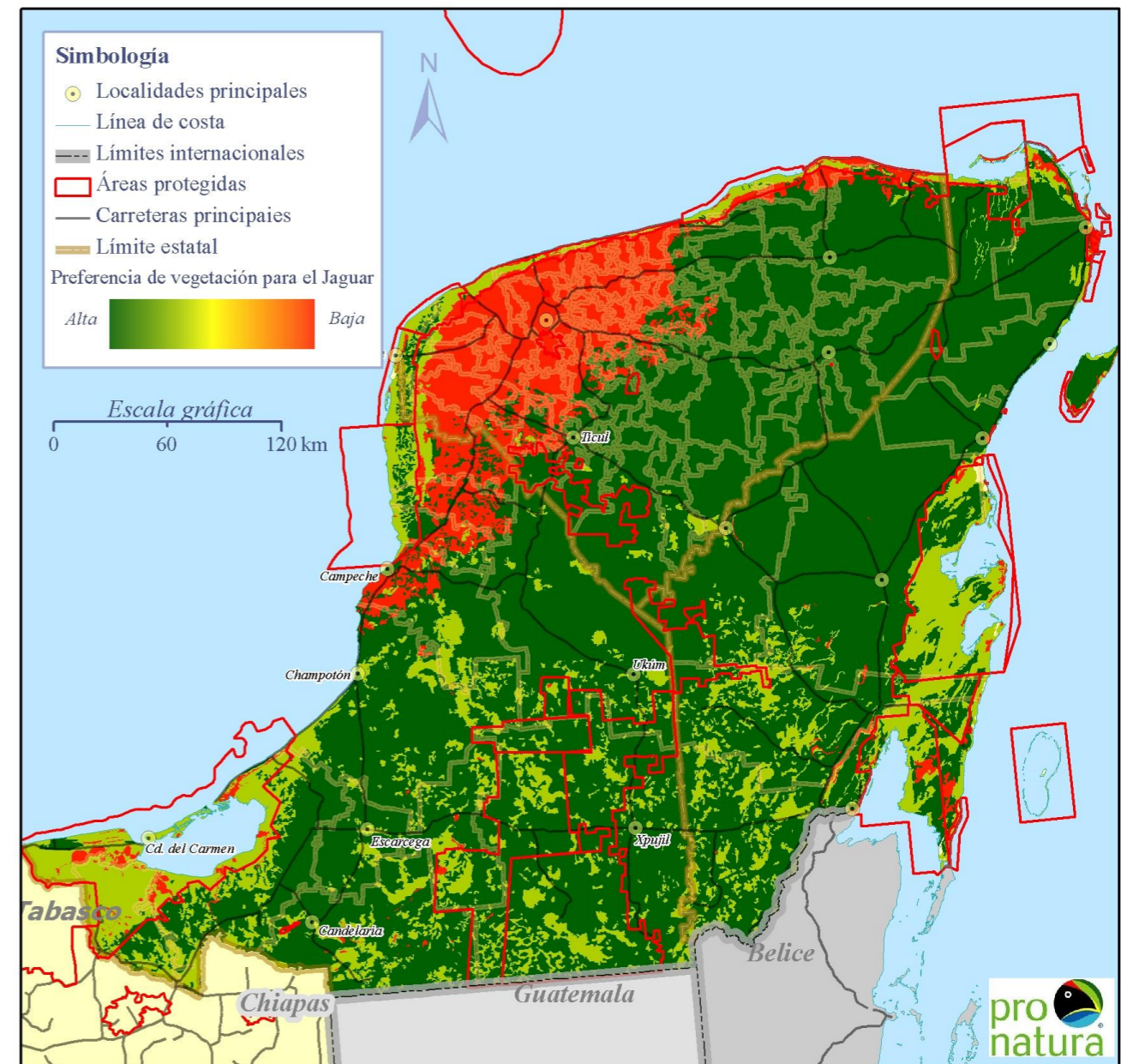


Constante

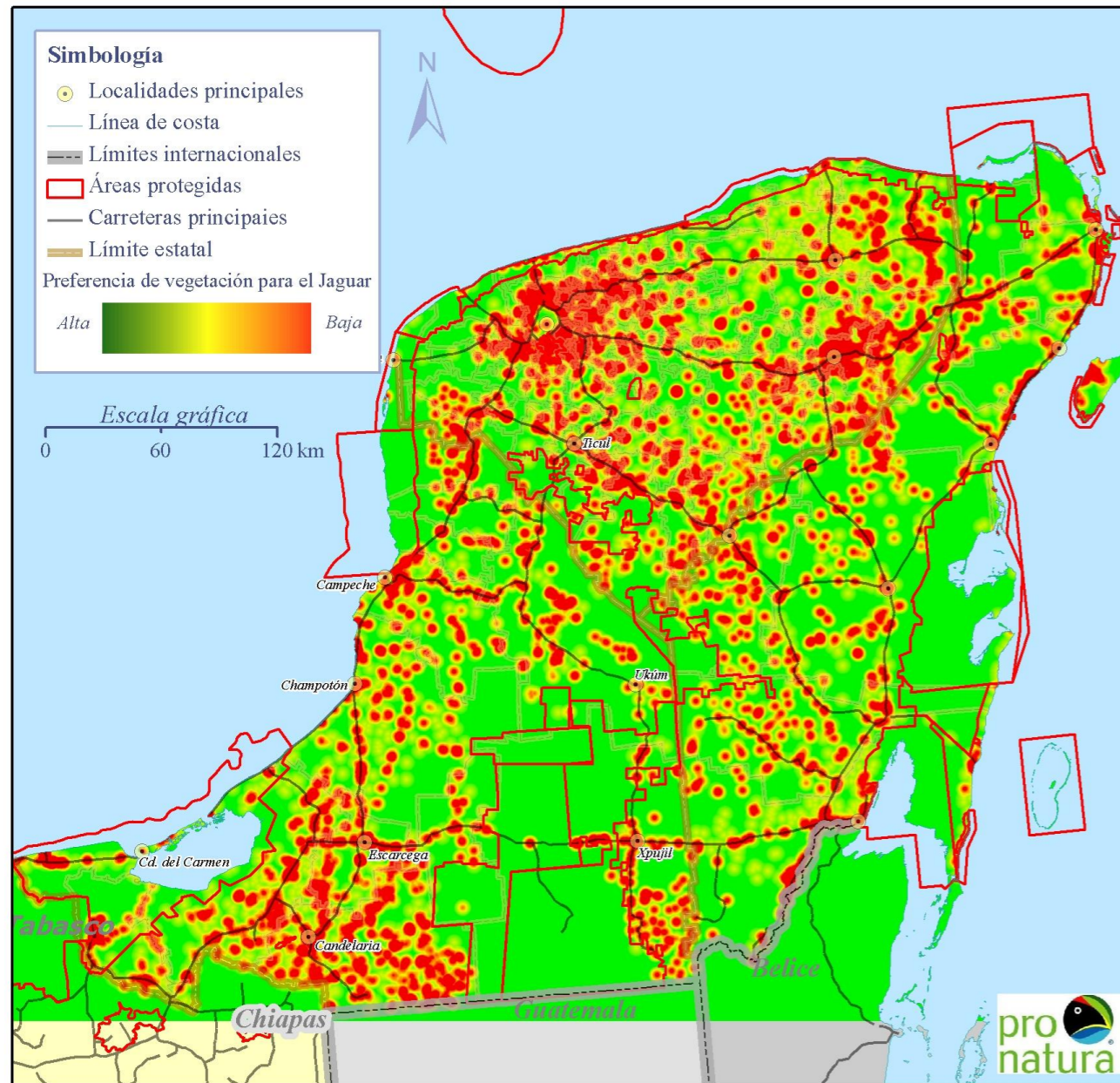
# Vegetation



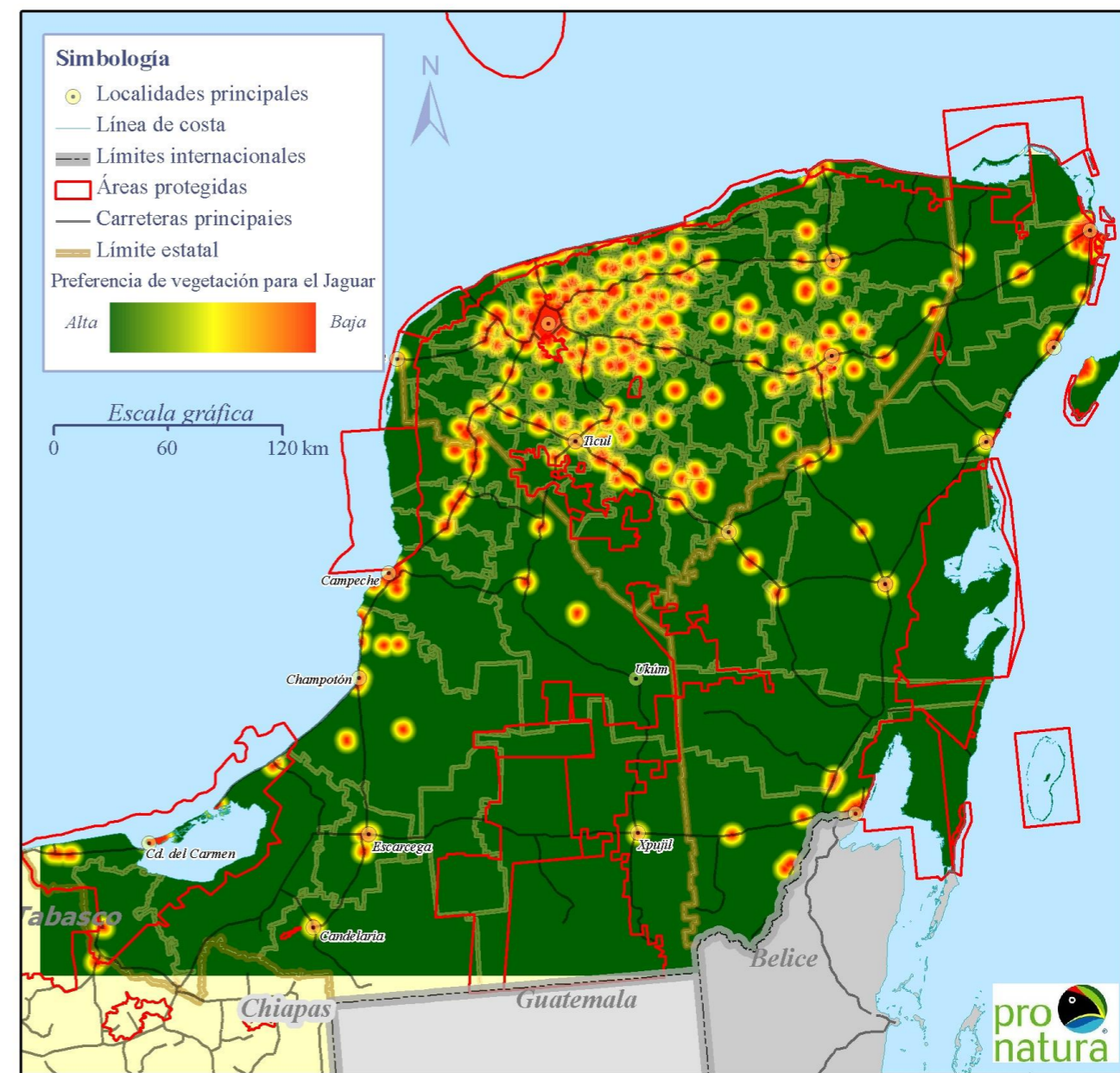
# Vegetation preference



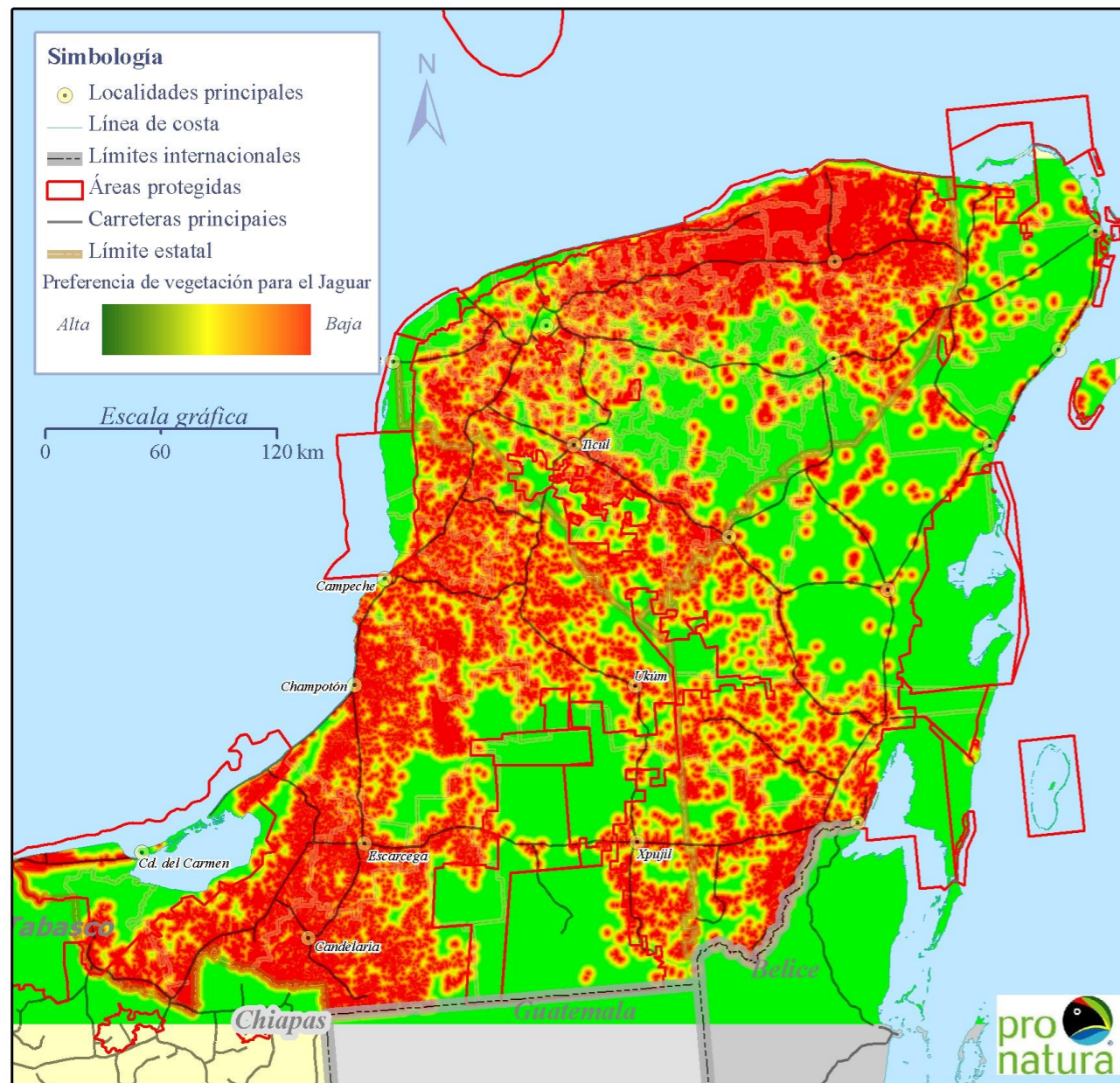
# Villages



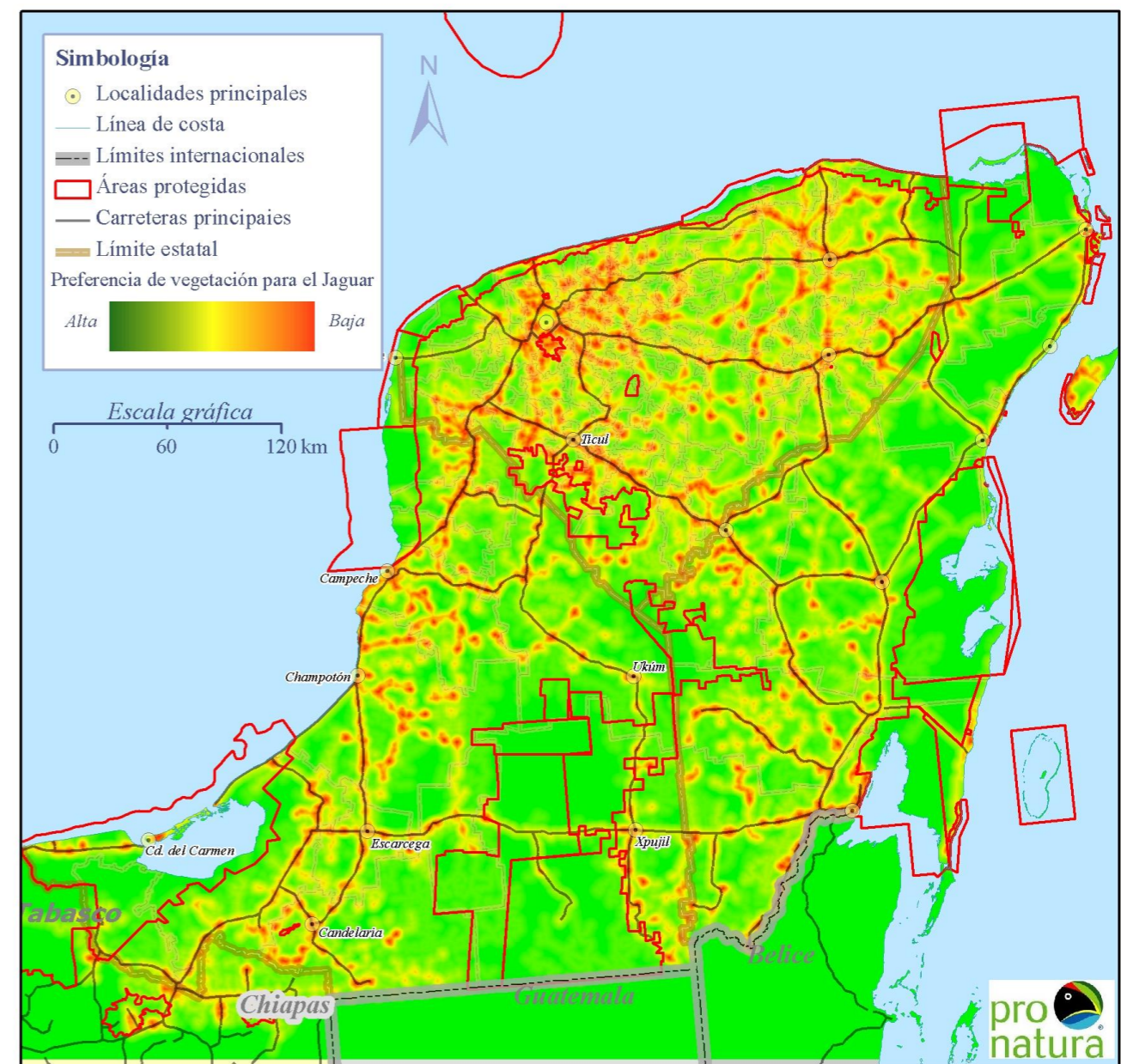
# Urban towns



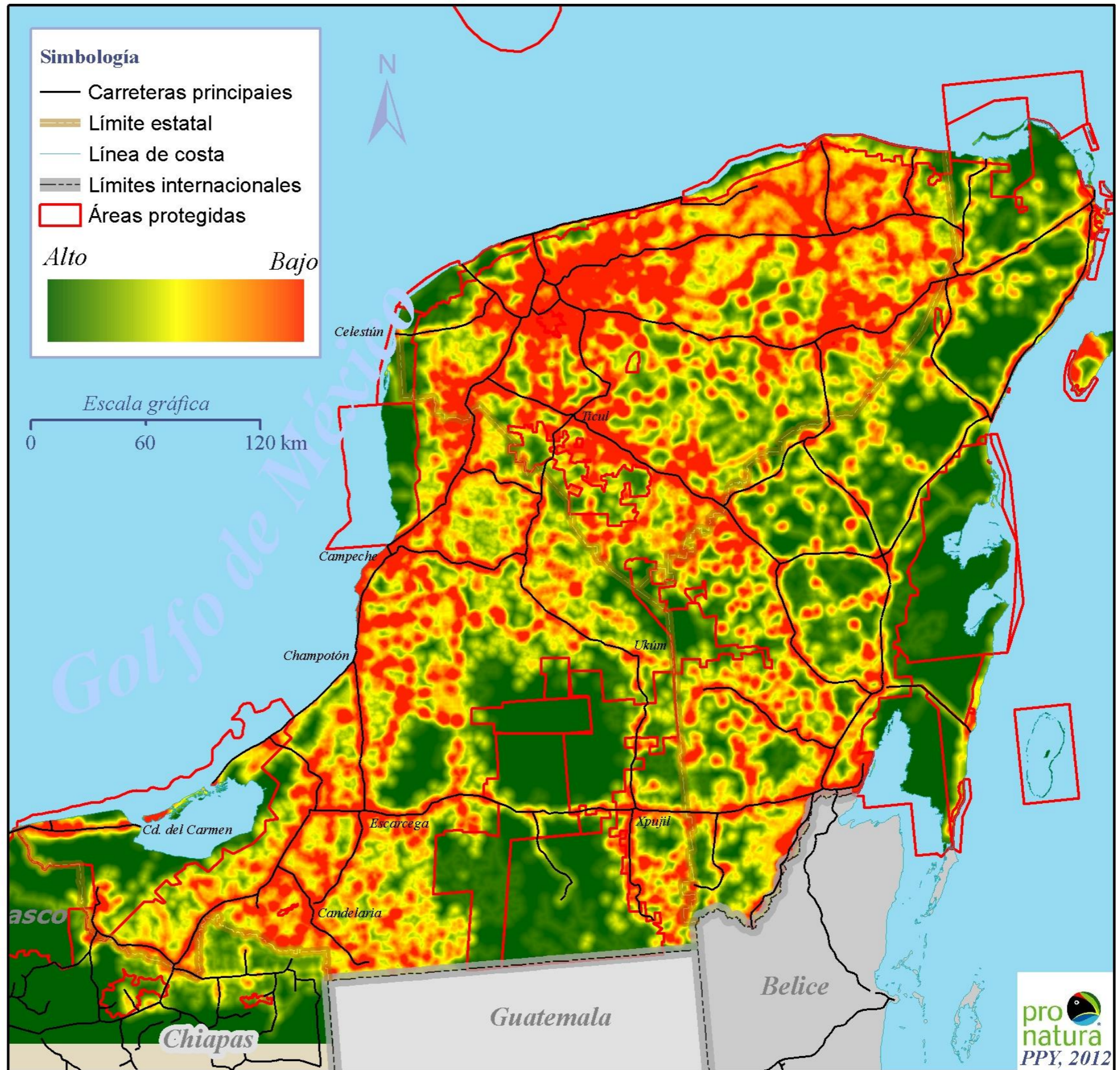
# Agricultural



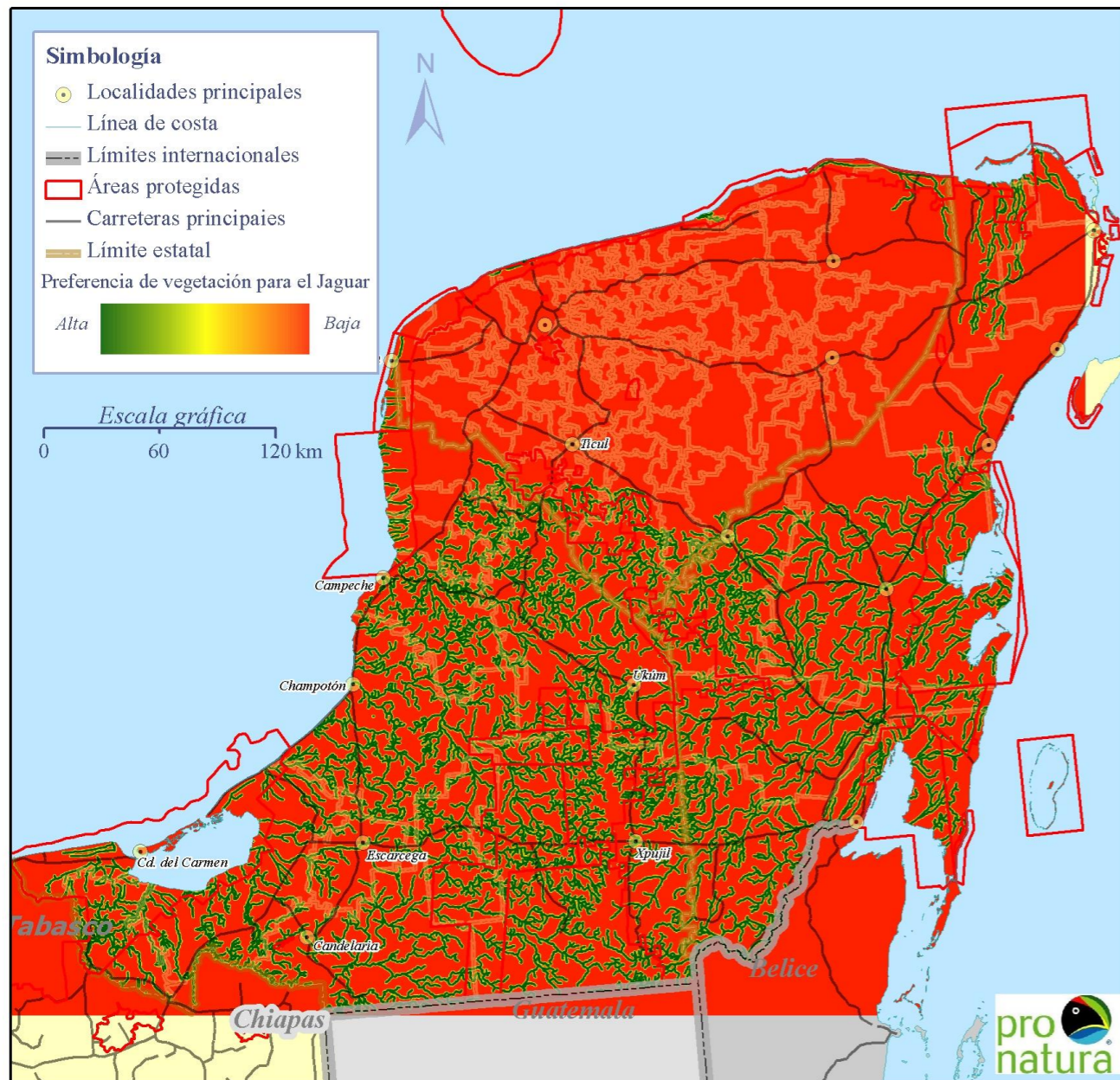
# Roads



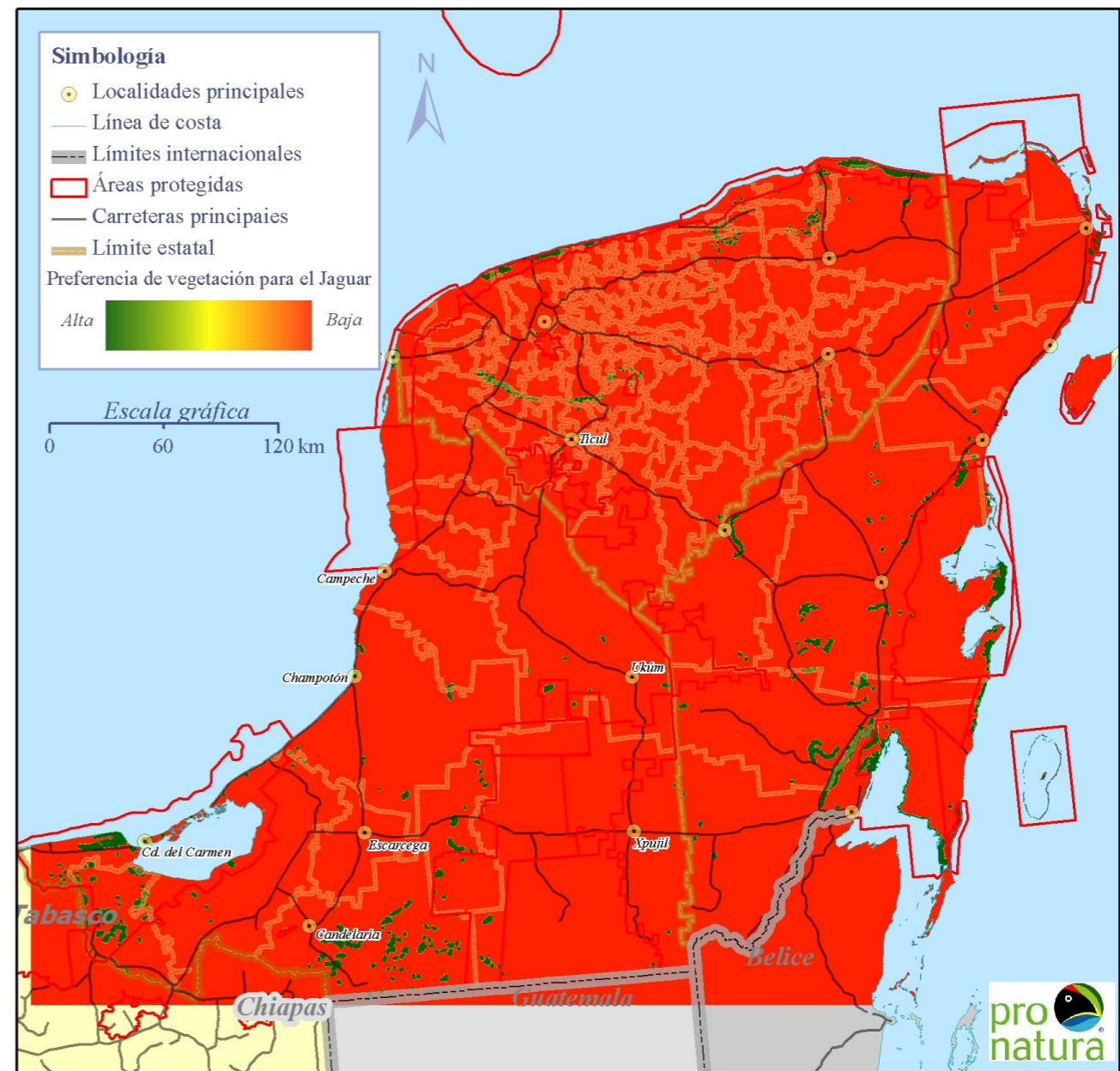
# Anthropogenic influence



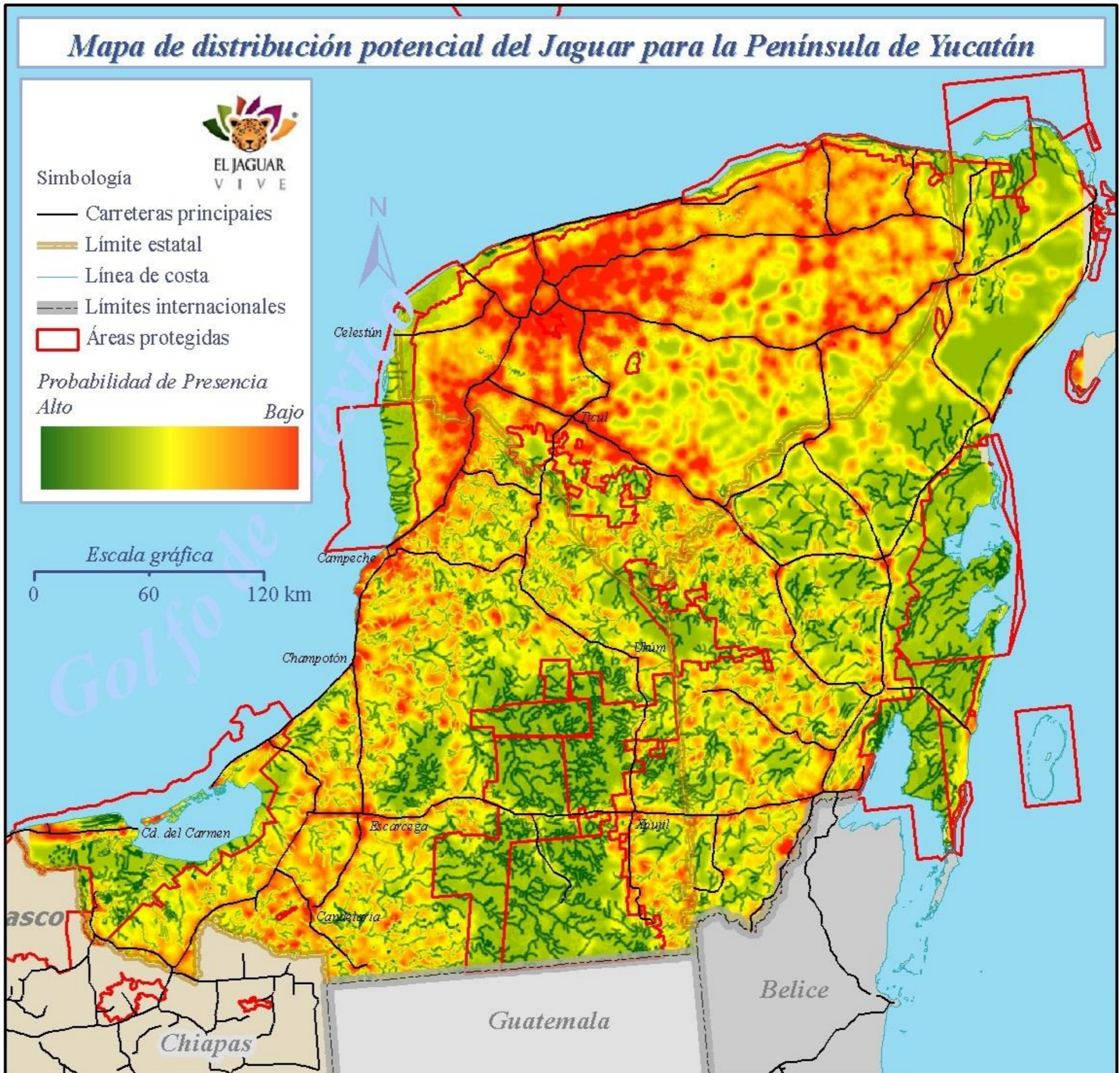
# Rivers



# Water bodies



Mapa de distribución potencial del Jaguar para la Península de Yucatán




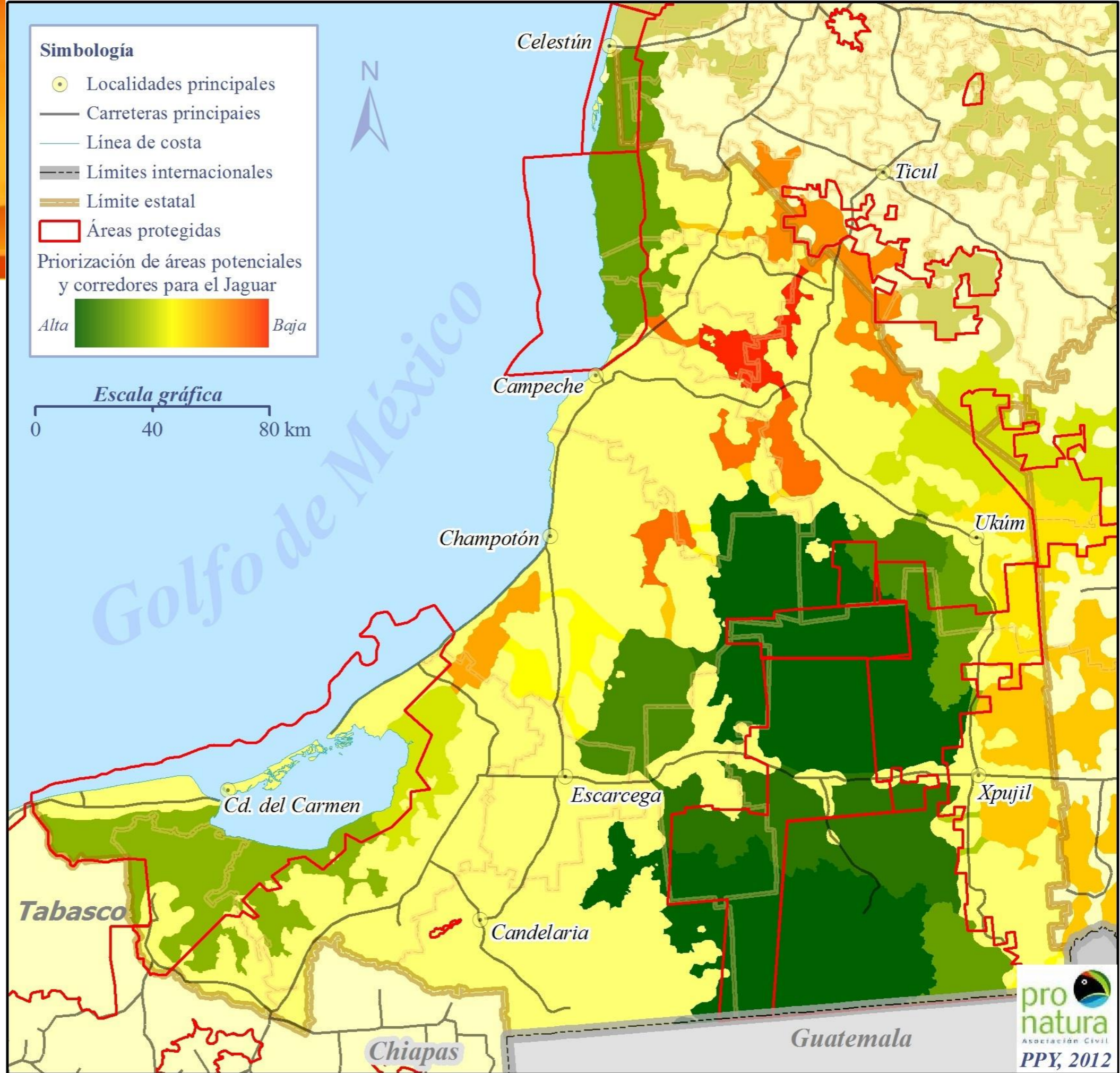
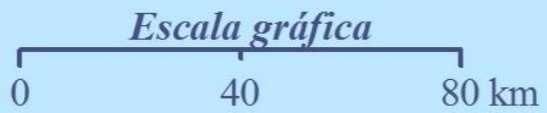
Distribution  
Jaguar  
Map

**Simbología**

- Localidades principales
- Carreteras principales
- Línea de costa
- Límites internacionales
- Límite estatal
- Áreas protegidas

Priorización de áreas potenciales y corredores para el Jaguar

Alta  Baja



# Corridor Jaguar Map



Gerardo García Contreras  
[gcontreras@pronatura-ppy.org.mx](mailto:gcontreras@pronatura-ppy.org.mx)

