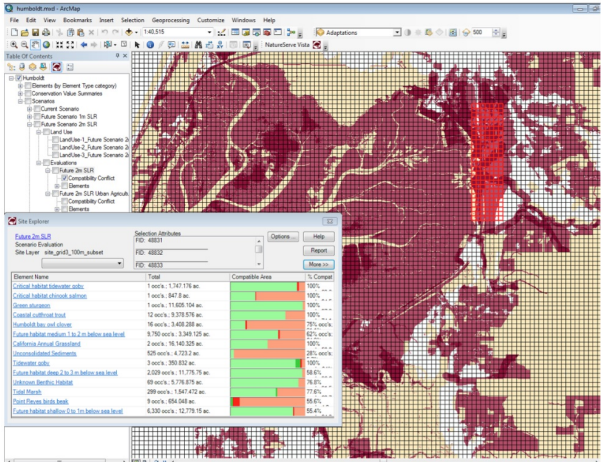


A Powerful Scenario-Based Assessment and Planning Tool

bit.ly/vistatool



Exploring results of scenario evaluation using Vista's explorer function.

Why

It's important to integrate environmental considerations into all planning projects in order to understand their potential impacts on the health of animals, plants, and ecosystems.

Planning has become increasingly complex, resulting in the need for intelligent tools to facilitate the process and deliver actionable information.

To avoid or mitigate against impacts on the environment, project decision-making needs to be guided by defensible and well-documented quantitative information and visually informative maps.

What

NatureServe Vista® is a free tool that integrates conservation considerations with many types of planning, such as land-use and marine planning, natural resource management, infrastructure and transportation, energy development, green infrastructure, and climate change adaptation.

The tool helps managers and planners assess impacts on a variety of natural, cultural, and development objectives and create options for sites, or entire landscapes and seascapes.

Vista supports decision-making by providing objective and documented reports and maps that are easy to replicate or update.

The tool combines data, expert knowledge, and stakeholder values to create well-documented and defensible solutions.

Vista supports ongoing, routine plan implementation and adaptive management.

Vista Contact:
Patrick Crist | Patrick_Crist@natureserve.org

A Powerful Scenario-Based Assessment and Planning Tool

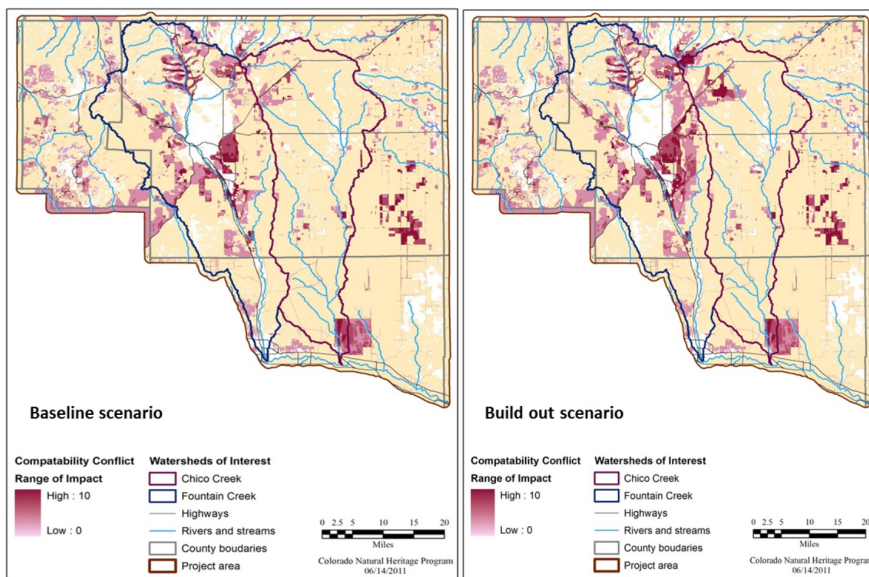
bit.ly/vistatool

Vista in Action

Long-Range Transportation Planning in Pikes Peak

Pikes Peak Area Council of Governments (PPACG) developed and adopted both a long range transportation plan and an integrated regional mitigation plan to guide their future development, while avoiding impacts to the environment.

NatureServe Vista was used to analyze the ecological impacts of various transportation and development scenarios. The tool provided outputs to identify priority areas for conservation and mitigation in the region. The results led to the development of land-use scenarios and ultimately, PPACG's preferred development plan.



Comparison of PPACG scenario evaluations in Vista. Left is the current or baseline scenario of actual land use and infrastructure. Right is the build out scenario based on current plans. Tan areas have conservation elements (e.g. habitats) that have met their retention goals under the scenario and/or have no conflict in those locations. Pink to red areas are where conservation elements occur that have not met their goals and are in conflict with features in the scenario at those locations. The darker the shade of red, the greater the number of elements in conflict.

I really like the software, I think it's a great way to organize a great deal of data and very easily build a planning project, which can be used and updated by diverse stakeholders. Although documenting of decisions along the process can be a time-consuming process, it really helps to make sure all are transparent and justified and/or supported.

- Vista Survey Respondent

Vista Contact:
Patrick Crist | Patrick_Crist@natureserve.org