

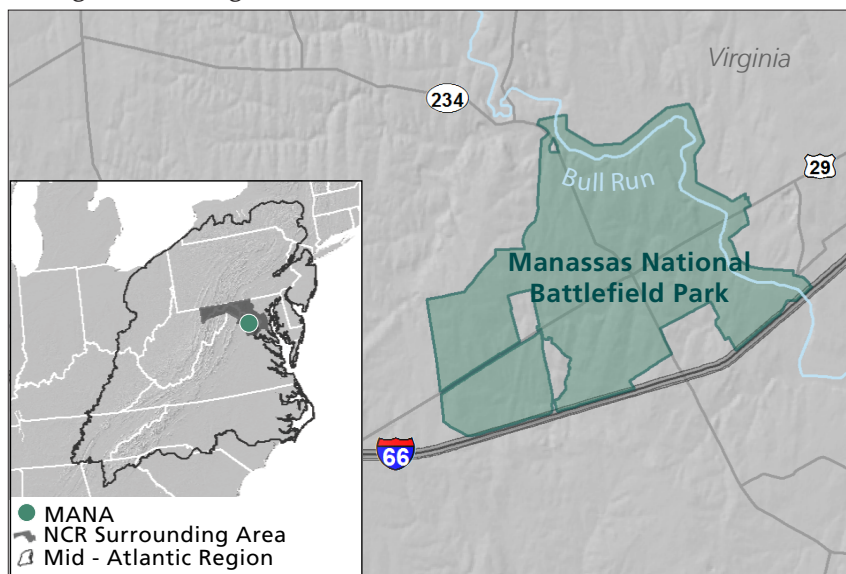


# Climate Change Vulnerability of Terrestrial Areas at Manassas National Battlefield Park



## PLANNING FOR CHANGE

Located in a zone of ecological transition, near where the Piedmont and the Northern Piedmont meet, **Manassas National Battlefield Park (MANA, Manassas)** supports a diversity of natural communities. As a 4,400 acre protected area within a landscape heavily pressured by development, the park provides opportunities for ecological adaptation in the face of environmental change. However, as global temperatures rise and precipitation patterns become more extreme (Intergovernmental Panel for Climate Change (IPCC) 2013), the *natural habitats* (see glossary, page 9, for definition of italicized words) of the park are increasingly vulnerable to climate-driven stresses. To begin to understand how climate change will impact terrestrial habitats in the National Capital Region (NCR), the National Park Service partnered with NatureServe to conduct **climate change vulnerability assessments**. This initial assessment for Manassas examines how climate and landscape influence vulnerability and identifies areas most and least vulnerable today and in the near future. Our goal is to help park managers and visitors understand climate change vulnerability and support the development of informed management strategies.



### IMPORTANT TERMS

**VULNERABILITY** Describes whether the ecological condition of a region or habitat is at risk from climate change impacts.

**EXPOSURE** Describes the nature and magnitude of changes in temperature and precipitation by comparing a given time period against a historical baseline.

**ADAPTIVE CAPACITY** Describes the ability of a region or habitat to maintain species and ecological processes as climate changes. Adaptive capacity at a specific location considers the area's unique physical features and its connectivity to other natural areas.

**MANASSAS NATIONAL BATTLEFIELD PARK** is located in the southeastern portion of the NCR, in northern Virginia just outside of D.C. We consider the implications of climate change for the park within the context of the NCR surrounding area and the Mid-Atlantic region.

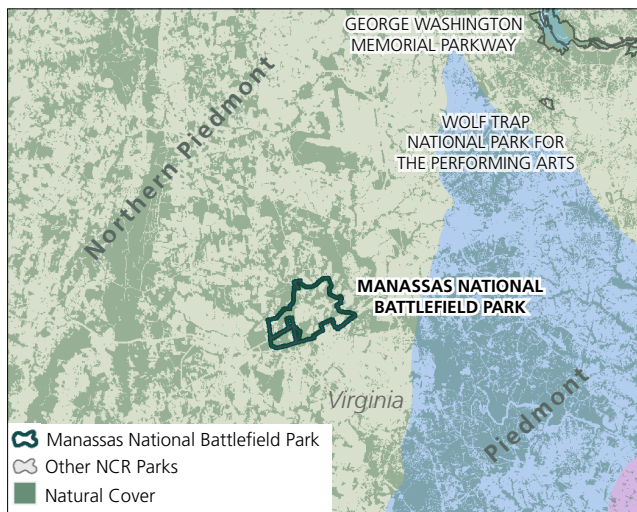
## WHAT IS CLIMATE CHANGE VULNERABILITY?

We define **VULNERABILITY** as the risk of losing species and ecosystem processes due to rapid environmental change. We integrate two components of vulnerability, **EXPOSURE** and **ADAPTIVE CAPACITY**, to arrive at a single measure. Areas most at risk are those likely to experience big changes in temperature and precipitation (i.e., high exposure) but have little capacity to adapt (i.e., low adaptive capacity). To understand how the climate of Manassas National Battlefield Park is changing over time, we analyzed temperature and precipitation over two time periods: **observed** (1981 – 2014) and **near future** (through 2040), compared to a mid-century **baseline** (1948 – 1980). The results presented here are part of a broader regional assessment of vulnerability for 11 NCR parks and the surrounding National Capital Region, interpreted in the context of regional environmental change in the Mid-Atlantic. Our approach describes drivers of *climate change* vulnerability, how vulnerability is spatially distributed, and a framework for park managers to anticipate and address changes in the coming decades.



# HOW VULNERABLE IS MANASSAS NATIONAL BATTLEFIELD PARK?

**Manassas National Battlefield Park** is located in northern Virginia, within a highly urbanized and rapidly growing area of the Mid-Atlantic, but an area that also supports important biodiversity. The park is in the Northern Piedmont region, with the Piedmont to the east and the Southeastern Plains just beyond. These *ecoregions*, which represent provinces of unique physiography, soils, climate, and vegetation, together contain a diversity of natural communities. As the climate changes, **the park can play an important role as part of a network of refugia and stepping stones**, connecting natural communities and providing opportunities for adaptation. To better understand how management actions can protect park resources and enhance the ecological role of the park in a changing world, we first assess the overall **VULNERABILITY** of terrestrial habitats at Manassas National Battlefield Park by combining measurements of **EXPOSURE** and **ADAPTIVE CAPACITY**. Next, we characterize the drivers of **EXPOSURE** (changes in temperature and precipitation) and **ADAPTIVE CAPACITY** (landscape characteristics).



**MANASSAS NATIONAL BATTLEFIELD PARK IN CONTEXT.** MANA is located in the Northern Piedmont (beige), with the Piedmont (blue) just east. Areas of natural vegetation cover are represented by darker shading on the map.

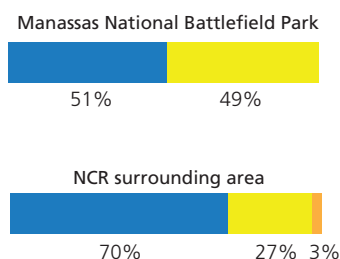
## Research Highlights

### VULNERABILITY SCORE



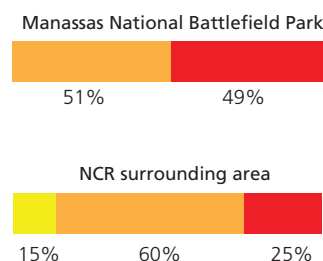
During the **observed** time period (1981 – 2014), we find vulnerability is low to moderate for most of Manassas National Battlefield Park reflecting low to moderate climate change exposure for most of the area. Differences in vulnerability are primarily driven by differences in adaptive capacity across the landscape. Because of the park’s enduring features, and connectivity to other natural areas, adaptive capacity is mostly below average for much of the park, particularly when compared to the region as a whole. In the near future (through 2040), vulnerability is high to very high for the park due to a sharp increase in exposure. Increased exposure is expected to lead to species turnover. Areas in the park with average to below average adaptive capacity may have difficulty supporting species diversity and ecosystem processes in the future.

**Observed Climate Change Vulnerability (1981 – 2014)**



**OBSERVED VULNERABILITY.** Vulnerability is low (blue) for 51% of MANA and moderate for 49% of the park. There are no areas of high or very high vulnerability. Higher vulnerability occurs where adaptive capacity, especially connectivity, is low, such as in areas along roads or near adjacent urban expansion.

**Near Future Climate Change Vulnerability (through 2040)**



**NEAR FUTURE VULNERABILITY.** In the future, vulnerability increases dramatically due to increased exposure with high to very high scores (orange to red) recorded for MANA. Average to below average adaptive capacity means MANA is more vulnerable than the surrounding NCR area.

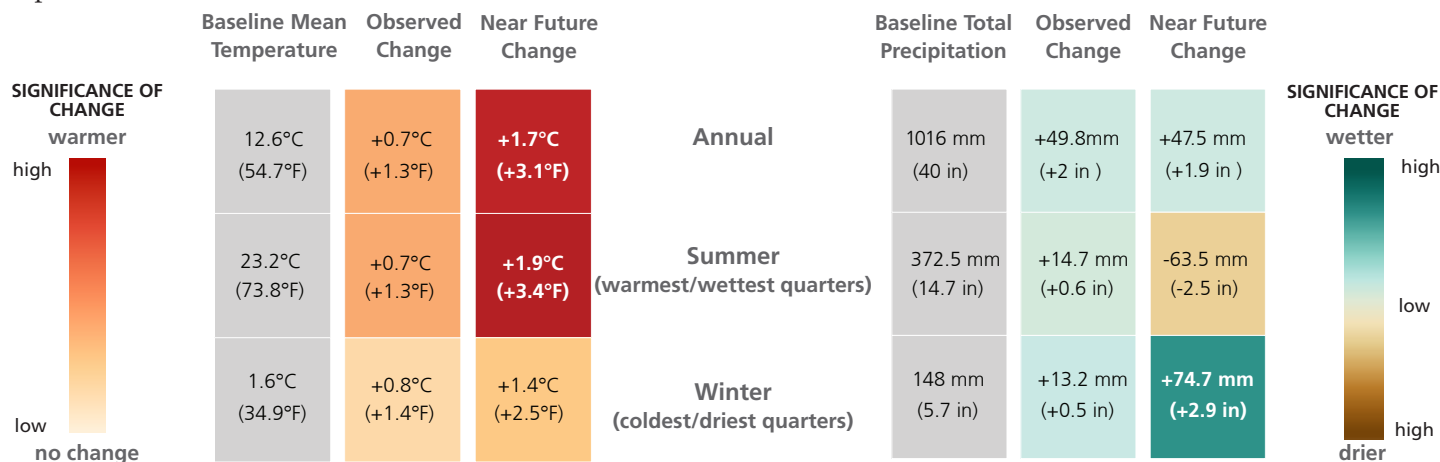


# COMPONENTS OF VULNERABILITY

## Exposure

To understand how global climate change impacts Manassas National Battlefield Park, we analyze **EXPOSURE**, defined as the **nature and magnitude of changes in patterns of temperature and precipitation**. Analyses of annual and seasonal climate data reveal that the park is already experiencing climate change and indicate that park managers can anticipate significantly more change in the near future.

**EXPOSURE** is measured by analyzing annual and seasonal changes in temperature and precipitation over three time periods. We first characterize a mid-20th century **baseline** (1948 – 1980) and quantify its natural variability. We then compare **observed** climate (1981 – 2014), and **near future** climate (through 2040) to baseline conditions and measure the changes. Baseline and observed climate data is derived from weather station measurements, which reduces uncertainty. Near future projections are derived from an ensemble of 15 global climate models from the IPCC 5th Assessment Report (Taylor et al. 2012, IPCC 2013). Full methods will be documented in a technical report available on the NPS IRMA portal after project completion.



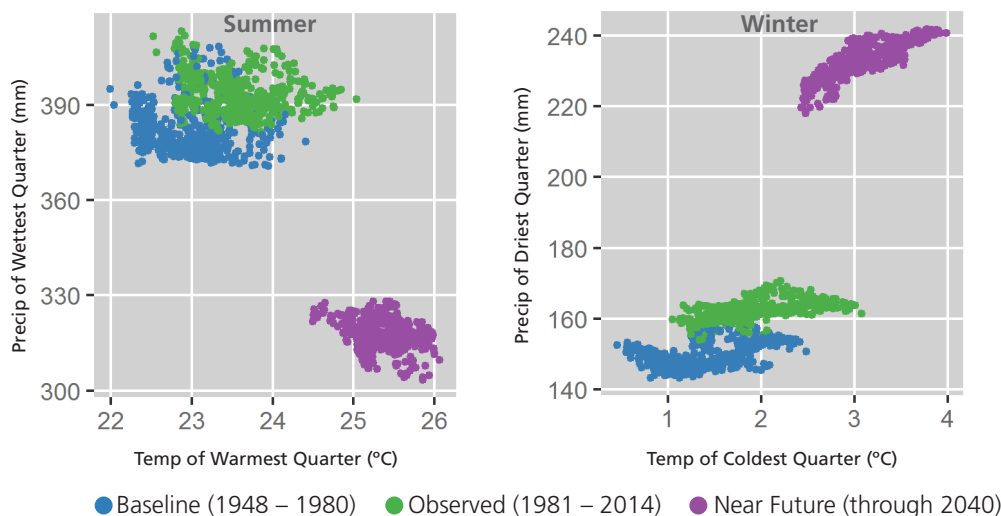
**CHANGES IN TEMPERATURE.** Between the baseline and observed periods, an annual temperature increase of 0.7°C (1.3°F) has already occurred at MANA, pushing the mean observed temperature up to 13.3°C (56°F). Continued increases are expected in the near future, especially in summer where the average temperature is nearly 2°C (3.4°F) higher than that of the baseline. These increases in near future temperature are a statistically significant departure from baseline conditions, as indicated by greater saturation in color (dark red).

**CHANGES IN PRECIPITATION.** In the observed period, slight increases in precipitation were recorded across both seasons. In the near future, that pattern is projected to change with decreases in precipitation for the wettest quarter (summer) and increases for the driest (winter). Greater saturation in color represents values that are more statistically significant. The most notable change is the near future increase in winter precipitation which represents a statistically significant departure from baseline conditions (dark green).

## Research Highlights

At Manassas National Battlefield Park, temperatures in the **observed** period (green) already show evidence of warming when compared to the baseline. Modest increases in both summer and winter precipitation are detected.

In the **near future** (purple), we anticipate shifts to warmer and drier summers and warmer and wetter winters. Models indicate that by 2040, precipitation may decrease by close to 20% in the summer as temperatures rise nearly 2°C (3.4°F). In the winter, precipitation is forecast to increase by 50% while temperatures rise 1.4°C (2.5°F).

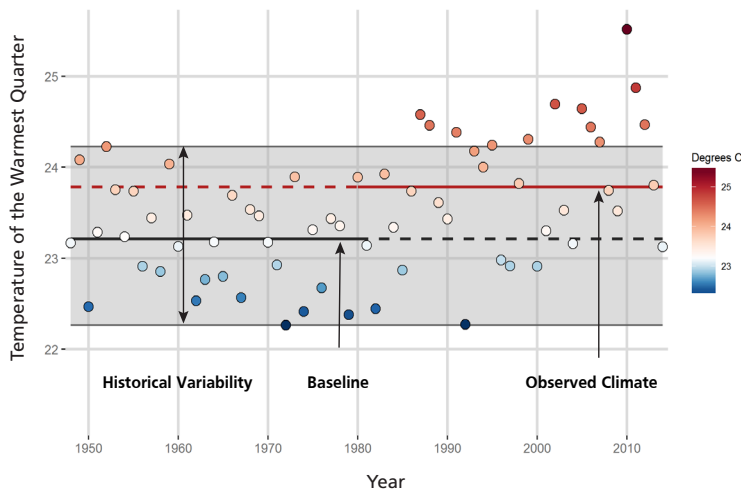


**SEASONAL TEMPERATURE AND PRECIPITATION PATTERNS.** Each dot represents the 30-year average for a sample point falling within MANA and the immediate surroundings.

# COMPONENTS OF VULNERABILITY

## Exposure

### The Magnitude of Change

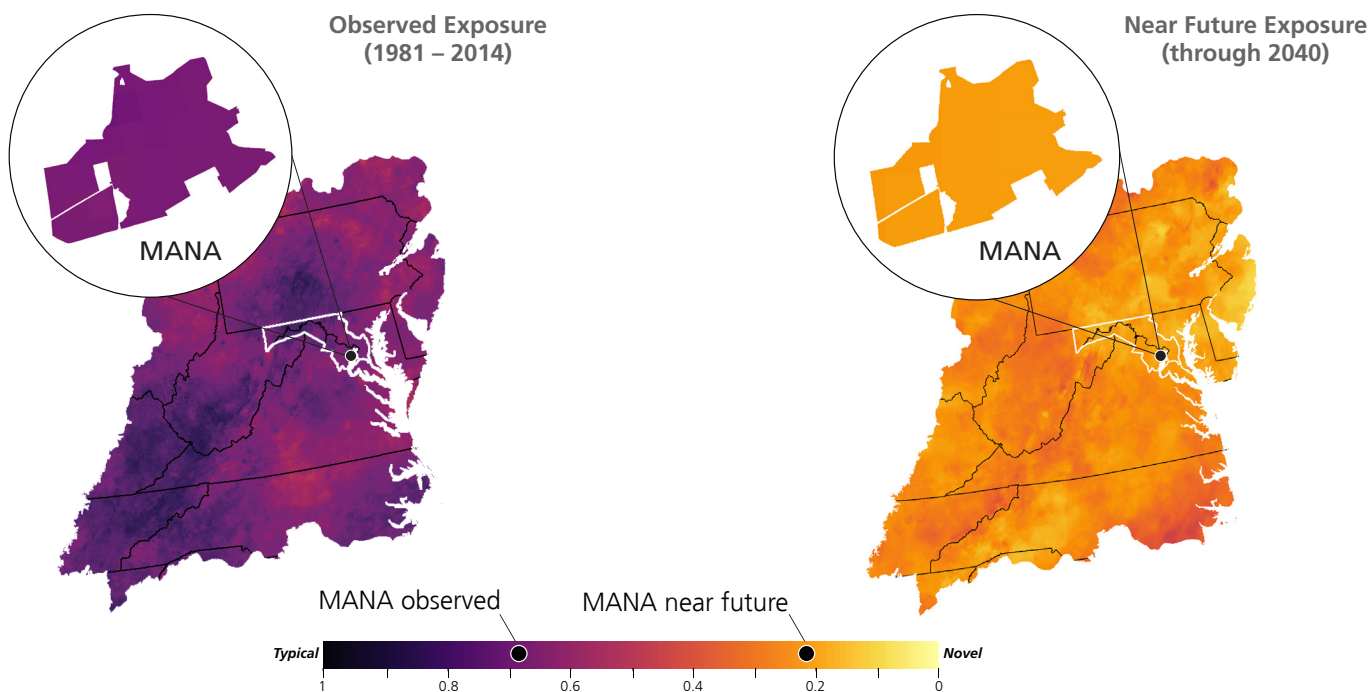


**MEASURING THE MAGNITUDE OF CHANGE.** The summer temperature for MANA has increased since the mid-century baseline. The average temperature for the observed period (solid red line) is higher than recorded average annual temperatures (dots) for most years in the baseline, falling towards the top of the range of historical variability (shaded gray bar). The average summer temperature for the near future (not shown) is projected to be over 25.1°C (77°F), and falls completely outside the range of historical variability.

The magnitude of change refers to **how much EXPOSURE** Manassas National Battlefield Park has experienced in recent decades and how much is projected for the near future. By comparing the climate in the **observed** (1981 – 2014) time period to the historical variability in the **baseline** (1948 – 1980), we can understand whether temperature and precipitation patterns today are **typical** of the range of conditions experienced in the past. Temperature and precipitation values falling completely outside their historical range would indicate **novel** climatic conditions, to which ecosystems may not be adapted. The projected climate of the **near future** is assessed against the baseline in the same way. Analyzing and mapping EXPOSURE gives managers an understanding of the nature and magnitude of climate change, how it may vary across the landscape, and how exposure contributes to overall vulnerability.

### Research Highlights

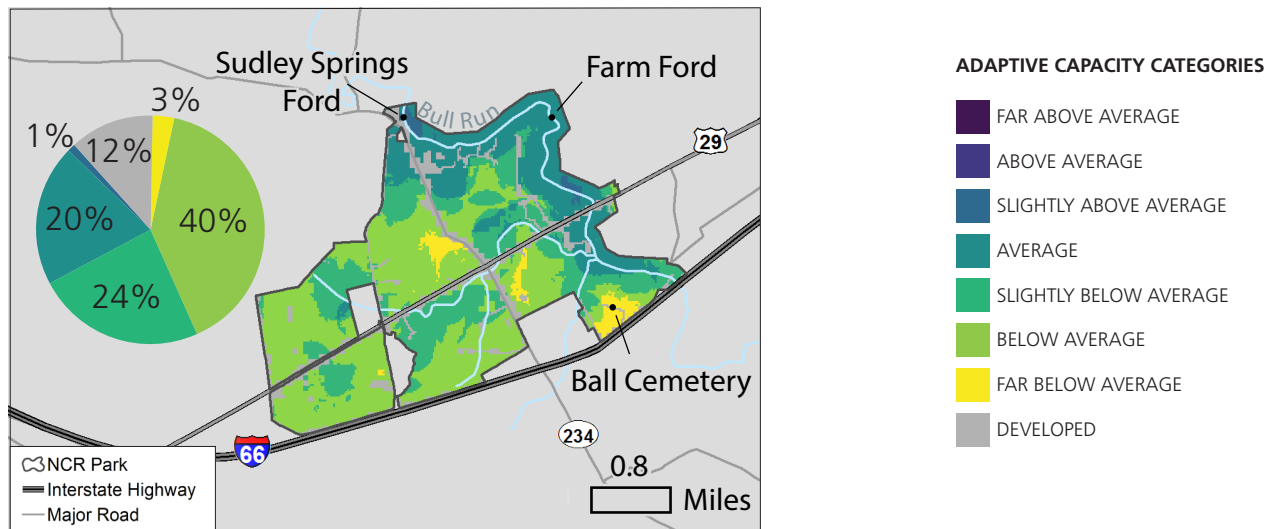
There is already evidence of changing climate in parts of the Mid-Atlantic region (pink), though observed climate averages do not fall completely outside the range of variation experienced in the past. Temperatures in the **observed** period have risen, but precipitation patterns are close to historical norms, and overall exposure for Manassas National Battlefield Park is relatively low (purple). In the **near future**, the Mid-Atlantic region and Manassas rapidly move towards high levels of exposure and novel climate conditions (yellow). The overall exposure score of 0.21 for the near future indicates that by 2040, conditions at the park are likely to be more extreme than in 79% of the baseline years. Extreme temperatures are the primary driver of the exposure score, though shifts in precipitation towards drier summers and wetter winters also contribute.



# COMPONENTS OF VULNERABILITY

## Adaptive Capacity

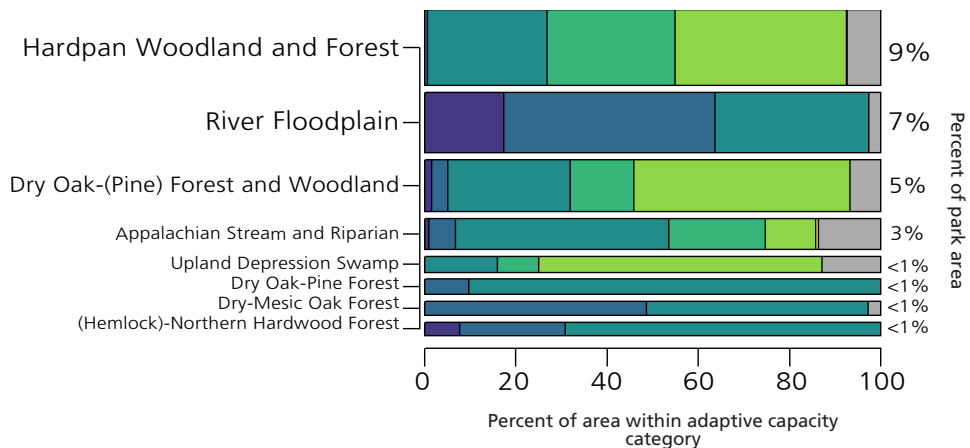
**Adaptive Capacity** is the ability of a region or habitat to maintain species and ecological processes as the climate changes. In this study, we focus on two key characteristics of adaptive capacity, **LANDSCAPE DIVERSITY** and **LOCAL CONNECTEDNESS** (Anderson et al. 2016), to assess Manassas National Battlefield Park and the terrestrial habitats within it. We identify places that are more or less resilient to the disturbances associated with climate change to help park managers develop informed adaptation strategies.



**ADAPTIVE CAPACITY AT MANA.** On balance, adaptive capacity at MANA is average to below average when compared to similar settings in the Northern Piedmont. Areas of higher adaptive capacity are found where a diversity of physical conditions is present, including along creeks and Bull Run. Lower adaptive capacity is found in areas with far below average connectivity, especially those in the vicinity of the major roads that cut through the park.

## Landscape Diversity

Areas with high **LANDSCAPE DIVERSITY** contain a range of physical conditions and habitats that can support species as they adapt to a changing climate. Within a specific geophysical setting, landscape diversity is scored highest if there is a diversity of landforms (e.g., high ridges, steep slopes, coves, and floodplains), wide ranges in elevation, and a range of soil types. These *enduring features* are the foundation upon which ecological systems are built.



**LANDSCAPE DIVERSITY BY ECOLOGICAL SYSTEM.** For the ecological systems occurring at MANA, the graph displays the proportion of area in each of 8 adaptive capacity categories based on landscape diversity. Dark colors indicate higher landscape diversity and thus higher adaptive capacity. Taller bars designate ecological systems that occupy a greater percentage of the park. The ecosystem with the highest landscape diversity scores at the park is the River Floodplain, which covers about 7% of the park and has above and slightly above average landscape diversity (purple and turquoise) over about 60% of its area. (Hemlock) Northern Hardwood Forest also scores highly for landscape diversity, but occupies less than 1% of the park.

## Research Highlights

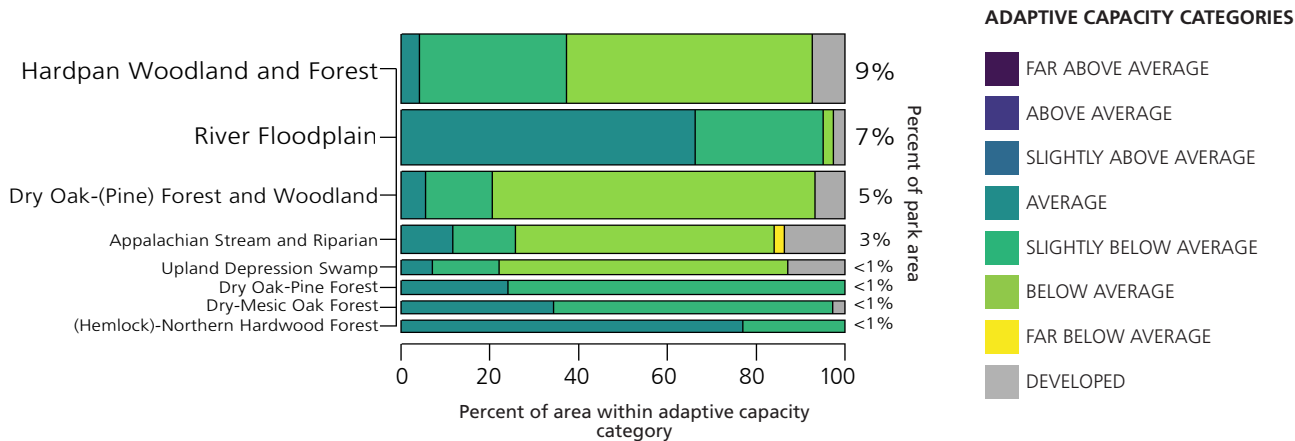
Landscape diversity is below average for much of the park. While diversity at the park is generally somewhat low, the sampling of gentle slopes, flats, and creek bottoms present at the park may provide more microhabitat options for species and communities as they adapt.

# COMPONENTS OF VULNERABILITY

## Adaptive Capacity

### Local Connectedness

**LOCAL CONNECTEDNESS** measures the degree to which current land cover patterns (e.g., agriculture, forest, wetlands) are likely to support important ecological processes and the movement and dispersal of species. When natural areas are connected, opportunities are present for climate change adaptation, and vulnerability is reduced.



**LOCAL CONNECTEDNESS BY ECOLOGICAL SYSTEM.** For the ecological systems occurring at MANA, the graph displays the proportion of area in each category of adaptive capacity based on local connectedness. Dark colors indicate higher connectivity and thus higher adaptive capacity. Taller bars designate ecological systems that occupy a greater percentage of the park. The river floodplain offers some of the best opportunities at Manassas for connectivity with other natural areas, but still scores average to below average for local connectivity (blue to green). Many of the other ecosystems at the park are largely scattered in isolated patches, as reflected in their below average scores for local connectedness (green to yellow).

### Research Highlights

Local connectedness is below average for most of the park due to the presence of developed and other altered areas. The forest along Bull Run scores the highest for connectivity of any area in Manassas, with a connectivity score of slightly above average to average.

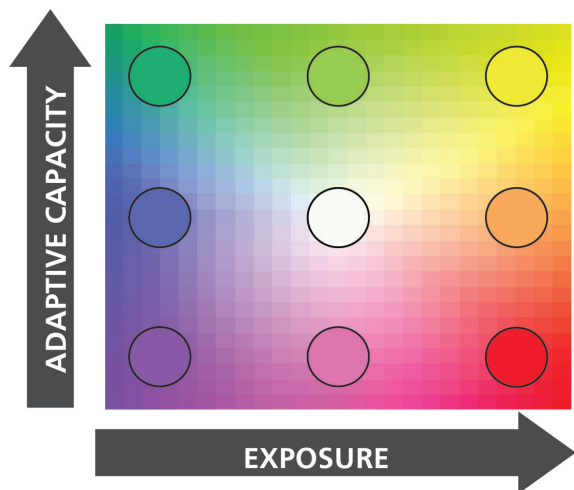


A boardwalk crosses over a wetland area near Bull Run at Manassas National Battlefield Park.

# PATTERNS OF VULNERABILITY

## Local Trends

Understanding how climate change (EXPOSURE) and local landscape characteristics (ADAPTIVE CAPACITY) influence vulnerability is a central goal of this assessment. We quantified and mapped these relationships for Manassas National Battlefield Park and the NCR surrounding area to identify what areas are most or least vulnerable today, and what we can expect in the near future. ADAPTIVE CAPACITY and EXPOSURE scores were divided into low, moderate, high, and very high categories and combined into the overall VULNERABILITY scores as presented on page 2 of this document and as illustrated below.



### VULNERABILITY SCORE

#### LOW

- LOW EXPOSURE / HIGH ADAPTIVE CAPACITY
- LOW EXPOSURE / MODERATE ADAPTIVE CAPACITY
- MODERATE EXPOSURE / HIGH ADAPTIVE CAPACITY

#### MODERATE

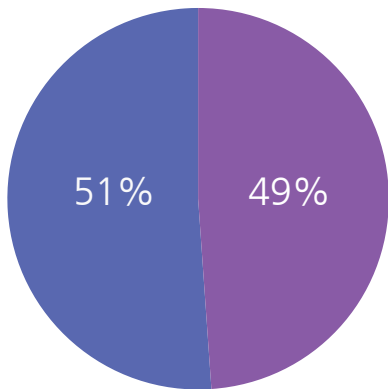
- LOW EXPOSURE / LOW ADAPTIVE CAPACITY
- MODERATE EXPOSURE / MODERATE ADAPTIVE CAPACITY
- HIGH EXPOSURE / HIGH ADAPTIVE CAPACITY

#### HIGH

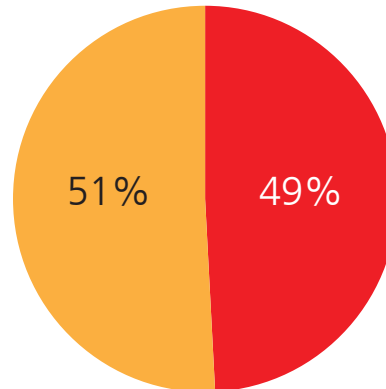
- MODERATE EXPOSURE / LOW ADAPTIVE CAPACITY
- HIGH EXPOSURE / MODERATE ADAPTIVE CAPACITY

#### VERY HIGH

- HIGH EXPOSURE / LOW ADAPTIVE CAPACITY



Observed Climate Change Vulnerability for MANA (1981 - 2014)



Near Future Climate Change Vulnerability for MANA (through 2040)

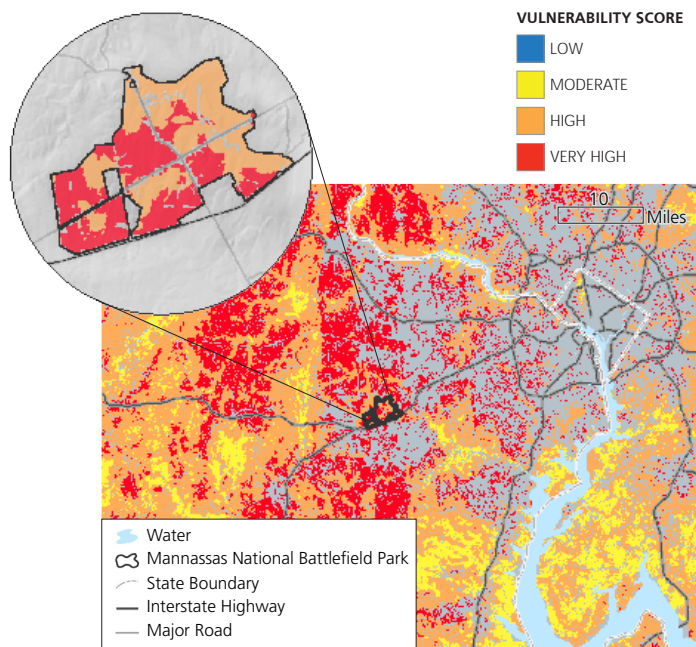
## Research Highlights

In the **observed** period, vulnerability of Manassas National Battlefield Park is generally low to moderate, owing to generally moderate adaptive capacity and relatively low exposure. While there are no areas of moderate exposure, some areas of low exposure coincide with low adaptive capacity, resulting in moderate vulnerability.

Exposure increases to high levels across the region in the **near future**, resulting in scores of high to very high vulnerability for most of Manassas National Battlefield Park. Differences in vulnerability are driven by differences in adaptive capacity. Vulnerability is lowest (high) in the eastern portion of the park, where average landscape diversity coincides with bands of connected forests along Bull Run and other small creeks. Developing forward-looking adaptation strategies aimed at maintaining or increasing adaptive capacity will help ensure that the natural resources of Manassas National Battlefield Park can endure the stresses of rapidly changing conditions.

# WHAT WE CAN DO

## Recommendations & Management Strategies



**NEAR FUTURE VULNERABILITY AT MANASSAS NATIONAL BATTLEFIELD PARK** Mapping the spatial pattern of vulnerability can inform site-specific adaptation strategies. Developed areas in the regional map are dark gray. Vulnerability within park boundaries is seen in the inset.

This **climate change vulnerability assessment** analyzed several components of **VULNERABILITY** for Manassas National Battlefield Park and identified the areas that are most and least vulnerable and why. This work represents an important first step in the application of a climate-smart adaptation framework (Stein et al. 2014) through which park managers can identify, evaluate, and implement adaptation strategies suited to observed conditions and adaptable to conditions in the near future. Additional work is needed to refine vulnerability and adaptive capacity to include other direct and indirect impacts of a changing climate.

Broad adaptation strategies relevant to Manassas National Battlefield Park are provided in the Climate Change Vulnerability Impacts and Strategies table. These strategies can support managers as they begin planning for change. The next phases of the project will provide additional information to guide site-specific adaptation actions aligned with these strategies. This work includes assessment of ecosystem-specific drivers of vulnerability, identification of regional priorities for maintaining connectivity, and evaluation of field data to characterize the local impact of non-climate stressors on **ADAPTIVE CAPACITY**. Through these actions, we can safeguard the natural treasures of Manassas National Battlefield and ensure that they are resilient for future generations of park visitors.

**CLIMATE CHANGE VULNERABILITY IMPACTS AND STRATEGIES TABLE**

VULNERABILITY SCORE	CLIMATE IMPACTS	STRATEGY
<b>Low</b>	With high adaptive capacity and relatively low climate change exposure, these sites are least at risk. In the near future, there are no areas of low vulnerability at MANA.	<b>Manage for persistence</b> , focus actions on preventing impacts by <i>non-climate stressors</i> (e.g., habitat loss, fragmentation, and invasive species).
<b>Moderate</b>	With moderate to high adaptive capacity and less exposure, these areas can continue to support diverse natural communities. In the near future, there are no areas of moderate vulnerability at MANA.	<b>Encourage persistence but accommodate change</b> . Actions should focus on (1) decreasing <i>non-climate stressors</i> to restore or enhance ecological integrity and (2) maintaining landscape connectivity to facilitate transitions.
<b>High</b>	Areas with high vulnerability in the near future have high exposure but moderate adaptive capacity. This includes much of the northernmost parts of MANA, especially areas that border Bull Run. <i>Species turnover</i> and restructuring of communities is likely.	<b>Accommodate change and novel communities</b> . Maintaining connected landscapes will support the persistence of diverse ecosystems, but actions should accommodate turnover of native species. Actions to maintain ecosystem functions and processes and limit biodiversity loss are favored (e.g., aggressive management of invasives, species translocations).
<b>Very High</b>	With high exposure and low adaptive capacity, areas at MANA with very high vulnerability may experience transformational changes likely to negatively impact overall biodiversity. This includes mostly the south-western part of the park, and areas bordering major roads.	<b>Accommodate significant change and reevaluate management goals</b> . Actions can be targeted for maintaining ecosystem functions and limiting biodiversity loss, but efforts aimed at maintaining existing ecological communities may not achieve desired outcomes.



# TO LEARN MORE

The information in this report is based on climate change scenarios from the Intergovernmental Panel on Climate Change (IPCC 2013), published climate datasets TopoWX (Oyler et al. 2014) and Prism (Daly et al. 2008), an analysis of terrestrial resilience for the eastern United States (Anderson et al. 2016), and analyses by NatureServe. To explore the data and learn more about our methods and the science behind climate change, please visit the links below.

1. Please visit the NCR Enduring Features Data Basin Gallery to further explore the information about Manassas National Battlefield Park presented in this brief. [http://bit.ly/databasin\\_NCR](http://bit.ly/databasin_NCR)
2. More information about the data and methods used to characterize exposure will be made available in the final project report (Smyth et al, *in prep.*). Contact NatureServe to learn more.
3. More information about the data and methods used to characterize resilience can be found at: [http://bit.ly/TNC\\_resilience](http://bit.ly/TNC_resilience)
4. Climate Science Special Report. The Fourth National Climate Assessment. U.S. Global Change Research Program. <https://science2017.globalchange.gov/>
5. U.S. Climate Adaptive capacity Toolkit, NOAA. <https://toolkit.climate.gov/>
6. National Park Service Climate Change Response Program: <https://www.nps.gov/orgs/ccrp/index.htm>
7. NatureServe, Climate Change Program <http://www.natureserve.org/biodiversity-science/conservation-topics/climate-change>
8. National Capital Region, Inventory & Monitoring Network: <https://science.nature.nps.gov/im/units/ncrn/>
9. National Park Service, National Capital Region, Natural Resources and Science, Urban Ecology Research Learning Alliance: <https://www.nps.gov/rlc/urbanecology/index.htm>

## GLOSSARY OF TERMS

<b>Climate Change</b>	Changes in weather patterns over relatively long time-scales. In this study, climate is defined based on averages and variability in temperature and precipitation for about 30-year periods.
<b>Ecological System</b>	A standardized ecological unit representing plant communities influenced by similar physical environments and dynamic ecological processes (like fire or flooding). Altered and disturbed vegetation are excluded.
<b>Ecoregion</b>	Provinces of unique physiography, soils, climate, and vegetation, containing geographically distinct assemblages of natural communities and species.
<b>Enduring Features</b>	The physical settings defined by landform, bedrock, soil, and topography are largely unchanged through time and provide the physical underpinnings for ecological diversity.
<b>Landscape Diversity</b>	Complex topography and elevation gradients creating a range of local temperature and moisture conditions, called micro-climates, within a given area.
<b>Local Connectedness</b>	The degree to which land cover patterns (e.g., agriculture, forest, wetlands) provide natural connections, supporting important ecological processes and the movement and dispersal of species.
<b>Natural Habitats</b>	An ecological area supporting native species including forests, wetlands, and native grasslands, but excluding areas with extensive human influence (e.g., regularly mowed meadows). Since the native warm-season grasslands that have been planted and maintained at Manassas National Battlefield Park were not considered to be naturally occurring, they were not considered natural habitats for this study. Further studies are needed to determine the naturalness of these grasslands.
<b>Novel</b>	In terms of climate change exposure, “novel” refers to conditions that are higher or lower than the historical range of temperature or precipitation conditions observed in the past.
<b>Non-Climate Stressors</b>	External factors, unrelated to climate change, putting species and ecosystems at risk, such as invasive species, land use changes, predation, and disease.
<b>Refugia</b>	An area where environmental conditions allow a species or community to persist, even as unfavorable changes cause it to become extinct from surrounding areas.
<b>Typical</b>	In terms of climate change exposure, “typical” refers to conditions that are close to those experienced in the baseline past.
<b>Species Turnover</b>	Change in the types of plants and animals present at a site as new species move in and others are lost.

# REFERENCES

- Anderson, M.G., A. Barnett, M. Clark, C. Ferree, A. Olivero Sheldon, and J. Prince. 2016. Resilient Sites for Terrestrial Conservation in Eastern North America. The Nature Conservancy, Eastern Conservation Science.
- Daly, C., M. Halbleib, J.I. Smith, W.P. Gibson, M.K. Doggett, G.H. Taylor, J. Curtis, and P.P. Pasteris. 2008. Physiographically sensitive mapping of climatological temperature and precipitation across the conterminous United States. *International Journal of Climatology*. 28(15), pp. 2031-2064.
- IPCC. 2013. Climate Change 2013: The Physical Science Basis. Contribution of Working Group I to the Fifth Assessment Report of the Intergovernmental Panel on Climate Change [Stocker, T.F., D. Qin, G.-K. Plattner, M. Tignor, S.K. Allen, J. Boschung, A. Nauels, Y. Xia, V. Bex and P.M. Midgley (eds.)]. Cambridge University Press, Cambridge, United Kingdom and New York, NY, USA, 1535 pp.
- Oyler, J.W., A. Ballantyne, K. Jencso, M. Sweet, and S.W. Running. 2014. Creating a topoclimatic daily air temperature dataset for the conterminous United States using homogenized station data and remotely sensed land skin temperature. *International Journal of Climatology*, <http://dx.doi.org/10.1002/joc.4127>
- Stein, B.A., P. Glick, N. Edelson, and A. Staudt (eds.). 2014. Climate-Smart Conservation: Putting Adaptation Principles into Practice. National Wildlife Federation, Washington, D.C. [www.nwf.org/ClimateSmartGuide](http://www.nwf.org/ClimateSmartGuide)
- Taylor, K. E., R.J. Stouffer, and G.A. Meehl. 2012. An overview of CMIP5 and the experiment design. *Bulletin of the American Meteorological Society*. 93(4), 485-498.
- Full documentation of technical methods will be made available in a project report to be posted on the NPS IRMA portal pending project completion. For more information, contact Regan Smyth, NatureServe. [Regan\\_Smyth@natureserve.org](mailto:Regan_Smyth@natureserve.org)

## Acknowledgments

---

Produced by NatureServe for the National Capital Region with the support of the National Park Service Climate Change Response Program. Special thanks for reviews by the National Park Service.

Suggested citation: Smyth, Regan, Judy Teague, Stephanie Auer, Allison Kenlan, and Healy Hamilton, 2017. Climate Change Vulnerability of Terrestrial Areas, Manassas National Battlefield Park. Unpublished Resource Brief, Department of the Interior, National Park Service. 10 p.